



For your calendar:

Monday 5.5.25

Bank Holiday – School and Nursery closed.

Friday 2.5.25 8.50am – 9.50am

Coffee Morning for families whose children have a Special Educational Need or Disability (SEND).

Coming up soon:

April		
w/b Monday 28.4.25	-	Internal clubs start
w/b Monday 28.4.25	-	Golden Book Week
Wednesday 30.4.25	7.00pm	Drama club performance of High School Musical - Option 1
May		
Thursday 1.5.25	7.00pm	Drama club performance of High School Musical – Option 2
Friday 2.5.25	8.50am – 9.50am	Coffee morning for families whose children have a Special Educational Need or Disability (SEND)
Monday 5.5.25	-	Bank Holiday – School and Nursery closed
Wednesday 7.5.25	8.35am – 9.00am	YN to Y6 Class Open Time – Option 1
Wednesday 7.5.25	-	Class photographs for YN, Y5 and Y6
Thursday 8.5.25	8.35am – 9.00am	YN to Y6 Class Open Time – Option 2
Thursday 8.5.25	-	Class photographs for YR, Y1, Y2, Y3 and Y4

Reminders for you:

Internal Clubs

Clubs start w/b 28.4.25.

Please remember to let the school know if your child is unable to make a session so the registers can be updated.

Thank you.

PTA Second Hand Uniform Sales – every Friday morning 8.30am – 9.00am

In the Club House
Every item is £1.00

Both cash and card payments welcome.

If you are coming from the West Gate, please ask a member of staff on duty to bring you to the South Gate. Unfortunately, you will not be able to access the West Gate to leave school afterwards. We are looking for more volunteers so that West Gate access is possible at the end too.

Class Photos

Photographs take place next Wednesday and Thursday. Please see the dates above for details of which classes are on which days.

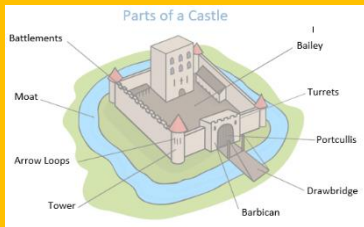
Please ensure your child is wearing the correct school uniform with a logo on the t-shirt, sweatshirt or cardigan, no PE fleeces. If they have the Golden Jumper, please could you send in a blue school sweatshirt or cardigan as well, thank you. Please note, school t-shirts should be worn with a grey skirt/trousers and not a summer dress patterned skirt or shorts.



Year 1 Weekly Information w/b 28.4.25

Recycling Materials

Over the coming weeks we will be creating our 3D castles in DT. Please can you send in any recycling that would be useful for this.



For example: egg boxes, cereal boxes, toilet rolls, pringles tubs, string.

New PE Days

As our timetables have changed, please note that PE will now be on a Tuesday for all of Year 1.

Please could you ensure that your child is not wearing earrings that day or that they can remove them by themselves.

Year 1 spelling words

Can you use these words in a sentence?


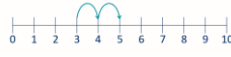
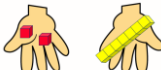



Friend
School
There
Here

Remember to include a capital letter, full stop and clear finger spaces.



In maths this week, we will be continuing our learning all about fractions. We have looked at recognising half of a shape and will now move onto recognising finding half of a quantity and finding half of a quantity. Children should see that to find a half, they need **two equal** groups. They need to check the amounts in each group after sharing to ensure that there is an equal amount in each group. Children will then progress to circling or shading half of a given quantity and finally begin to explore finding the whole from a half. For example, if 3 is half, what is the whole? Knowledge of doubles from prior learning can support this.

This week in Fluency Bee

w/b 28.4.25	Adding two (calculations) Exploring commutativity Subtracting 2 from even numbers Subtracting 2 on a ten frame
	<div style="display: flex; justify-content: space-around; align-items: flex-start;"> <div style="text-align: center;">  <p>Two more than 3 is 5</p>  </div> <div style="text-align: center;">  <p>2 + 7 = 9 7 + 2 = 9</p> <p>Addition is commutative.</p> </div> <div style="text-align: center;">  <p>Take 6 cubes. Continue to subtract 2 until you have 0 cubes.</p> <p><input type="text"/> subtract 2 is <input type="text"/></p> </div> <div style="text-align: center;">  <p>Take 8 counters. Subtract 2</p> <p>8 subtract 2 is 6</p>  </div> </div>

In RE, we will be starting to investigate our new topic "What do Christians learn from the stories of Jesus?"

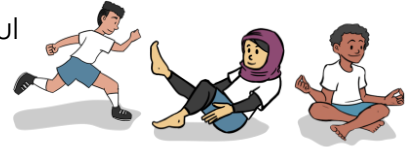
In history, we will be starting a new enquiry question which will be learning about our monarchy. Over this term, we will be learning about past monarchs and what a monarch is expected to do

as well as where monarchs live and how that has changed over time.

In science, we will continue our learning about different classifications of animals by exploring what makes an 'amphibian' an 'amphibian' and by identifying amphibians in the United Kingdom (including frogs, newts and toads).

In DT, we will be looking at the different features of a castle and discussing what makes a good toy castle. We will then be designing our own toy castle, thinking about the materials we will use and how we will join it together.

This half term in PE will be focusing on athletics, dance and mindful movement. We will be learning new skills and applying them to help us gain strength, balance, stamina and flexibility.



Following the information in the last Newsletter, we have started learning about the Zones of Regulation this week and are learning more about which emotion belongs in which coloured zone; red, blue, yellow or green. We will also be looking at how facial expressions can tell us how other people are feeling.

Wishing you all a lovely week,

Mrs Herman, Mrs Hill, Miss Marcazzo and Mrs Smith



Year 2 Weekly Information w/b 28.4.25

Sleepover

We are very proud of all the children who came to the sleepover. There were lots of values on display, including resilience, cooperation and independence. Well done!

PE

PE will take place on Tuesday for all of Year 2 in the summer term. Please ensure that PE kits are brought into school on Monday and contain the correct named PE kit. Please remove earrings before school on Tuesday. Thank you

Zones of Regulation

This week we will continue to talk about the Zones of Regulation and explore different emotions, sorting these into the four different zones – blue, green, yellow and red.

In English this week, we will be continuing to use the book 'Inside the Villains' by Clotilde Perrin as inspiration as we will be creating our own villains. We will be learning how to use our senses when describing a character. We will be learning about how to effectively use adjectives and expanded noun phrases. We will be creating our own characters thinking about their strengths and weaknesses and what makes them villainous!

In reading, we will be continuing the book 'The Giraffe, The Pelly and Me' by Roald Dahl. We will be reading in pairs and focusing on fluency and expression. We will then read in pairs to the class where we will 'perform' what we have been reading as a class. We will be focusing on how reading with expression can convey emotion.

The spelling quiz assignment will be set on Tuesday. This week's assignment will be to spell words where the digraph 'ey' makes an 'ee' sound e.g. key, valley, donkey, trolley, jockey, monkey, journey, kidney, chimney and turkey.

This week's spelling quiz words are below.

For review:	the, where, full
Might be new:	water, wild, after
Can you do?	learn. special

This week in Fluency Bee – below you will find some examples of how we will be exploring doubles and near doubles.

<p>w/b 28.4.25</p>	<p>Recognise near doubles Calculate with near doubles</p> <p>Circle the near double in each set.</p> <div style="display: flex; justify-content: space-around;"> <div style="text-align: center;"> <p>1</p> </div> <div style="text-align: center;"> <p>3</p> </div> </div> <p>Complete the calculations.</p> <div style="display: flex; justify-content: space-around;"> <div style="text-align: center;"> <p>1</p> $4 + 4 = \square$ so $4 + 5 = \square$ </div> <div style="text-align: center;"> <p>3</p> $9 + 9 = \square$ so $9 + 10 = \square$ </div> </div>
<p>w/b 5.5.25</p>	<p>Count in 2s How many (count in 2s)</p> <p>_____</p> <p>How many counters are there? Circle groups of 2 to help you count.</p> <div style="display: flex; justify-content: space-between; align-items: flex-start;"> <div style="text-align: center;"> <p>1</p> </div> <div style="text-align: center;"> <input style="width: 30px; height: 30px; border: 1px solid black;" type="text"/> </div> </div> <hr/> <div style="display: flex; justify-content: space-between; align-items: flex-start;"> <div style="text-align: center;"> <p>2</p> </div> <div style="text-align: center;"> <input style="width: 30px; height: 30px; border: 1px solid black;" type="text"/> </div> </div>

In maths this week, we will be continuing our unit on mass, capacity and temperature. We will begin by exploring how to add, subtract, multiply and divide using mass. We will then be comparing volume and capacity and then measuring in millilitres and litres.

In PSHE this week, we will be talking about our families, and discussing similarities and differences between families. We will be talking about why it's special to have a family, and how we can make our family a happy one, for example through sharing and talking.

In geography this week we will be starting a new enquiry question 'Could a polar bear live in the desert?'. We will be learning about where polar bears come from and what their natural habitat is like.

Have a lovely week,

Mrs Jayasuriya, Mrs Williams and Miss Wood



Year 3 Weekly Information w/b 28.4.25

Recorders

If you would like to practise at home, Mrs Rutherford recommends practising 'Popular' on the recorder, using the notes G, A and B.

<https://www.youtube.com/watch?v=BLhsMmj5KM>

Golden Hinde and Tower of London

As we head towards our class trips to the Tower of London and Golden Hinde next half term, we've included our small steps to a successful trip below.

Homework

This week, the children will be set a Spelling Shed homework task to complete during the week. It will be available from Tuesday to Tuesday.

In English this week, we are continuing to explore the features of non-chronological reports. We will be putting together a toolkit we can use in our writing and, later in the week, investigating the use of glossaries, headings and sub-headings to organise a report. Our team reading sessions are based around poetry for the next few weeks. We are continuing to think about how reading with expression demonstrates our understanding of a text.

These are the spelling words for this week (for the quiz on 6.5.25). We would appreciate it if you could please help your child to practise them at home.

For review:	fast, sugar, every
Might be new:	remember, bicycle, potatoes
Can you do?	naughty, possible

In maths this week, the children will be working with equivalent measures in millilitres and litres. We will then be turning our attention to fractions. The children will solve addition and subtraction calculations with fractions that have the same denominators. Then we will be exploring different ways that we can partition 1 whole using fractions. This half term, our problem-solving lessons are working on the skills of exploring and noticing. We'll use these skills to become more confident at tackling problems, even when the path to a solution is unclear to begin with.

Coming up soon in our Fluency Bee sessions and Speedy Maths (w/b 5.5.25):

w/b 28.4.25	Divide by 8 (group) Divide by 8 (share) Calculate with 8s Times Tables Rock Stars
w/b 5.5.25	Know 2x, 3x, 4x, 5x, 8x, 10x tables and division facts. Know pairs of numbers to 100 Times Tables Rock Stars

In the wider curriculum, in history we will be starting to learn about the Tudors and how The Battle of the Roses was a big fight between two powerful families, the Lancasters and the Yorks. We will discover how we can learn about the Tudor family by looking at their family tree and historical records.

In science we will be looking at how magnets attract some metals like iron and steel. We will be discussing how magnets have two poles – a north and a south and how opposite poles attract, and like poles repel.

In art we will be exploring what a landscape is and discussing how the foreground is the part of landscape nearest to the observer and how the background is the part of landscape furthest from the observer.

Is your child (or yourself) anxious about the Golden Hinde residential trip?

Here's some steps you can take starting now to get them ready for a fun trip. Don't leave it all to the last minute, especially staying away from home. Doing activities plenty in advance allows you the chance to take small steps and try something again if it doesn't go to plan first time around.

You know your child best, so adapt their preparation to how much (or little) they need in advance.

They're worried about staying away from home...
Maybe they've already been to the Year 2 sleepover last year.
Try play dates that extend to getting ready for bed and a late film. This replicates the Year 2 Sleepover and helps build confidence with getting changed before bed on the Golden Hinde.
Spend a night away from home at a relative's house. You could turn this into two steps by staying yourself for the first time.
Spend a night away from home at a friend's house.
You could have a night sleeping on roll mats and in sleeping bags, too (in their room, downstairs at home, at a friend's house), if they're worried about not having a bed to sleep in.

They're worried about it being a big trip...
Have a local day trip together that involves some walking.
Look at some pictures of the Golden Hinde and Tower of London on the internet.
Have a day trip to London together – you could even find the Golden Hinde and walk (30 minutes approx.) to the Tower of London.

Golden Rules...

- Keep opportunities for discussion open so they know they can talk to you.
- Talk about the trip positively yourself. If you tell them or show them that you're worried, they'll pick up on that and please don't promise they can go home during the trip. We will always call you if needed but once that seed has been planted they won't forget.
- Emphasise all the fun they're going to have and what a great opportunity it is. So many people have never slept on a ship and they get to do it!
- Don't write them notes to look at on the trip. You can tell them you missed them and give them a big hug when they get back.
- Pack for the trip together. They'll know what they've got with them and how to fit it all back in their bag at home time.
- Talk to your child's class teacher about any concerns. We're very experienced with this trip and other residentials and are ready to support your child to have a great time away.

We'll be preparing them at school, too, by talking about what we will do on the trip, looking at photos, discussing how we can all support each other and answering as many of their questions as possible in the lead up. All the staff are already looking forward to a great adventure together.

Have a great week,

Mrs Davis, Miss Jenkins, Mr Loughlin and Mrs McClelland



Year 4 Weekly Information w/b 28.4.25

Golden Book Week

After the children complete a super Golden Book week this week, we will be sending their books home for them to share with you before returning them back to us with a comment on the sticker provided.

Drama Club Performance

We are very lucky to be going to watch the Year 6 Drama Club show on Wednesday afternoon of High School Musical.

Zones of Regulation

The children have been very excited to begin our work on Zones of Regulation. We have all started using a class system each morning to let our teacher know which zone we are in.

In English, the children will continue to be immersed in suspense stories. They will develop some of the knowledge and skills needed, including how setting descriptions and character reactions help to build suspense. In reading, we will continue our class book *Kensuke's Kingdom* by Michael Morpurgo, with a focus on explaining key events in the text.

This week's spelling quiz words (taken from the Y4 Summer term list) will be:

For review:	notice, sentence, woman
Might be new:	decide, knowledge, regular
Can you do:	develop, forty

In maths this week, the children will finish their unit of work on decimals. We will be using our knowledge of decimals to divide one and two digit numbers by 100. We will also be using our understanding of what happens to a number when we divide it by 10 to help us. Later on in the week, we will complete a quiz to consolidate what we have learnt!

Coming up in speedy maths (*indicates new learning):

w/b 28.4.25	*Know division facts for 11x table at speed. Know pairs of numbers to 100. Give change from £1 at speed Know pairs of tens to 180 Add three 1-digit numbers at speed.
w/b 5.5.25	Add and subtract pairs of 2-digit numbers at speed. Use tables facts to work out related x at speed. Convert cm to mm and vice versa

In science this week, we will be learning about evaporation. What causes water to evaporate and are all liquids the same?

In geography this week, we will be learning about the water cycle. How does it work and how is water cleaned enough for us to drink?

In PSHE, we will be thinking about the emotions we feel when we experience loss. This may be through the death of a pet/family member/friend or when somewhere we care for moves away.

In our zones of regulation lesson this week, the children will be considering what our emotions look like.

In DT, we will be starting a new enquiry question focusing around cam toys! In this lesson, we will be understanding what a mechanism is and how cam toys function.

Have a great week.

Miss Croucher, Mr Vidal and Mr Gordon



Year 5 Weekly Information w/b 28.4.25

Can You Help?

We need parent/carer volunteers to accompany our trip to the Buddhapadipa temple, Wimbledon on Thursday 22.5.25. Letter to follow.

The trip is by coach and will last all morning, from approximately 9.00am to 1.00pm (timings to be confirmed).

If you would like to join us, please let us know via Scopay by Friday 9.5.25.

Homework

The first homework this term is due on Tuesday. Please check and sign your child's Learning Journal, which should show:

- Completion of at least 3 Spelling Shed activities
- The weekly MyMaths
- Daily reading (books, author, pages read)
- TTRS

Tasks are designed to take no more than 20 minutes a day. Developing this routine is essential to help your child prepare for Y6 and beyond.

PE and Games on Mondays

A reminder that this term, we will be having PE and Games on Mondays.

Please ensure you have your **full PE and Games kit** in school **every Monday**. It will be sent home on Fridays as usual.

In English, we will be exploring how a writer uses punctuation, grammar and vocabulary to entertain in science fiction. We are already hooked by our class reader 'Boy in the Tower' by Polly Ho-Yen. We have lots of questions about the main character Ade and we are intrigued by how a tower block could be menaced by plants.

The children will be having a spelling quiz on Tuesday 6 May on these words:

For review:	height, library, strength
Might be new:	recognise, relevant, immediately
Can you do?	convenience, exaggerate

In maths, we are using our knowledge of angles and degrees of turn in a circle to calculate angles on a straight line. After revising our knowledge of 2D and 3D shapes, we will be calculating angles in regular and irregular polygons and looking at the properties of compound 3D shapes.

Our Speedy maths will be:

w/b 28.4.25	Know all tables to 12 x 12 including division facts Convert cm to mm and vice versa Convert L to ml and vice versa Add and subtract 2-digit and 3-digit numbers Add three tens
--------------------	--

w/b
5.5.25

Know pairs of numbers to 100.
Know all tables to 12 x12 including division facts
Add and subtract 2-digit and 3-digit numbers
Continue simple number patterns

In science, we will continue investigating how a material changes state. This week we will be experimenting how ice melts in different materials.

In history, we will be introducing our new topic of the Roman Empire. We will specifically be looking at what land around the world the Romans were able to conquer.

In art, we will practise the skills we started to develop last week, in particular how to use a wooden model to draw the human body. We will also learn about our new focus artist, contemporary British painter, Lynette Yiadom-Boakye and how she creates large portraits of imaginary people using oil paints.

In PSHE, we will be thinking about our self-esteem and thinking of our own positive characteristics. We will be continuing using Zones of Regulation as a way of understanding our own emotions and those of others.

Have a wonderful week,

Mrs Temlett, Miss Penn & Mrs Beadle



Year 6 Weekly Information w/b 28.4.25

PE Kit

Please can you ensure your child has a full, correct PE kit in school every week. We have a whole afternoon for PE and games on a Friday and the children are required to change for these activities.

Please help us prepare for test week – names

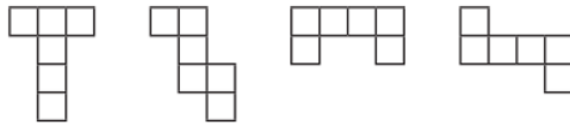
The children must write their full legal name on their NCT papers, including middle name/s, exactly as they appear on our register. We would be grateful if you could support us by practising these at home.

Please help us prepare for test week – DOBs

The children must also write their date of birth on their NCT papers. We would be grateful if you could ensure that your child knows their exact birth date and how to write it in either words or numbers.

In English this week, we will be looking at poetry and what we mean by 'free verse'. We will investigate root words and word families and how prefixes and suffixes alter the meaning of the words. We will also be revising tenses – simple present/past, present/past progressive, present/past perfect.

In maths, our focus turns to understanding and plotting co-ordinates. We will recap the difference between the x and y axis on a single plane first before moving onto a plane that has been split into four quadrants. We will also learn how to translate and reflect shapes between the quadrants. In problem solving, we will use our visualisation skills and do some practical investigation to decide how nets can represent 3D shapes. Which of these nets do you think could make a cube?



Please encourage your child to practise these words for next week's spelling quiz, which will take place on Tuesday 6 May:

For review:	persuade, recognise
Might be new:	conscience, sacrifice, yacht
Can you do?	significance, territorial, tongue

In geography, we will be starting a new topic related to our world's oceans. This week, we will be learning about the five oceans of the world, including where they are located, their surface area and the effect climate change has on them.

Our focus areas in PE and games this term are athletics, rounders and dance. These will take place as a carousel of activities on a Friday afternoon.

This week's dress rehearsal of 'High School Musical' will be enjoyed by those children not in Drama Club, together with Years 4 and 5. We are looking forward to seeing all of the hard work that has gone into rehearsals. Good luck to everybody with the performances this week!

Information for Drama Club

We are very much looking forward to performing 'High School Musical Jnr' this week! We will be performing to Y4 – Y6 on Wednesday afternoon as a dress rehearsal before our two evening performances on Wednesday and Thursday. The children have worked so hard in learning their lines, songs and dance routines – thank you for your support with helping them!

Please could children arrive at school on Wednesday and Thursday evening at 6.00pm. As we will be using the lights, children should come into school each evening wearing make-up. This should comprise of foundation, eyeshadow, blusher and mascara for the girls and foundation only for the boys. When the children arrive, they should come through the front door and head to 1S to change into their costumes. They will need to bring a water bottle and a small snack for the interval (not chocolate or sweets). Children should not bring their mobile phones to school.

Audience members should queue at the South Gate (Nursery). The PTA will be running a bar in the Club Room, which will be open from 6.30pm. Admittance to the hall will be 10 minutes before the performance is due to begin. We anticipate that the performance will finish at 8.30pm. All children should be collected from the front door after the performance – we will not be allowing any children to walk home without an adult.

There are a small number of tickets available for Thursday evening – please complete the [Google Form](#) if you would like extra tickets. The maximum per person is three and will be allocated on a first come first served basis. The Google form will be live from 9.30am tomorrow. The performance for Wednesday evening is sold out!

Have a great week,

Mrs Bowe, Ms James, Miss Marcazzo, Miss Swann and Mrs Waldron