



For your calendar:

Thursday 24.4.25
8.45am – 9.45am

PTA Class Reps Coffee Morning to discuss summer term events and planning for 2025 – 2026.

Friday 2.5.25
8.50am – 9.50am

Coffee Morning for families whose children have a Special Educational Need or Disability (SEND).

Coming up soon:

April		
Monday 21.4.25	All day	Bank Holiday – School and Nursery closed
Tuesday 22.4.25	8.35am	YN to Y6 – Nursery and school opens for the summer term
Wednesday 23.4.25	9.15am – 10.15am	Open Morning for prospective families. Please book here to visit our school and nursery
Thursday 24.4.25	8.45am – 9.45am	PTA Class Reps coffee morning with Mrs Druce Agenda: Summer term events
Friday 25.4.25 to Saturday 26.4.25	7.00pm – 8.00am	Y2 Sleepover at school
w/b Monday 28.4.25	-	Internal clubs start
w/b Monday 28.4.25	-	Golden Book Week
Wednesday 30.4.25	7.00pm	Drama club performance of High School Musical - Option 1
May		
Thursday 1.5.25	7.00pm	Drama club performance of High School Musical – Option 2
Friday 2.5.25	8.50am – 9.50am	Coffee morning for families whose children have a Special Educational Need or Disability (SEND)

Reminders for you:

Internal Clubs

Clubs start w/b 28.4.25.

Please remember to let the school know if your child is unable to make a session so the registers can be updated.

Thank you.

PTA Second Hand Uniform Sales – every Friday morning 8.30am – 9.00am

In the Club House
Every item is £1.00

Both cash and card payments welcome.

If you are coming from the West Gate, please ask a member of staff on duty to bring you to the South Gate. Unfortunately, you will not be able to access the West Gate to leave school afterwards. We are looking for more volunteers so that West Gate access is possible at the end too.

Local Gardens and Litter

Please could you remind children not to run through the front gardens of our neighbours after school and to take snack wrappers home with them as some are being dropped.

Thank you.



Year 1 Weekly Information w/b 21.4.25

PE Kits

Please can we ensure that PE kits are brought into school every Monday. Your class teacher will contact you if your child does not have a PE kit.

We hope you all had a lovely Easter Holiday.



Year 1 spelling words

Remember to include a capital letter, full stop and clear finger spaces.



In maths this week, we will be completing our learning about multiplication and division. Towards the end of the week will start our new learning all about fractions. In this small step the children explore recognising a half or two halves for the first time, looking at both objects and shapes. It is important that children know that a half means "one of two equal parts" and are able to count them. The children will have lots of opportunities to practically make halves and identify a half and a whole. They will look at various types of representations to develop a full understanding of a half. They also need to be shown half of these shapes and objects in different ways. For example, a square can be split in half vertically, horizontally or diagonally

This week in Fluency Bee

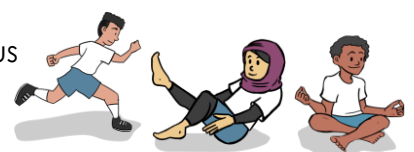
w/b 21.4.25	<p>Add 2 (even numbers) Add 2 on a ten frame (even) Add 2 (odd numbers) Add 2 on a ten frame (odd) Add 2 (calculations) Explore commutativity</p>
	<div style="display: flex; justify-content: space-between;"> <div style="width: 30%;"> <p>True or false?</p> <p>8 is two more than 6</p> <p style="color: red;">True</p> </div> <div style="width: 30%;"> <p>Let's build</p> <p>Take 3 cubes. Add 2 more.</p> <p>How many do you have now? 3 add 2 more is 5</p> </div> <div style="width: 30%;"> <p>Jack stands on number 2. He jumps on 2 more. What number will he land on?</p> <p>Have a think</p> <p>$2 + 2 = 4$</p> </div> <div style="width: 30%;"> <p>What do you notice?</p> <p>$2 + 7 = 9$ $7 + 2 = 9$</p> <p>Addition is commutative.</p> </div> </div>

In computing, we will be reviewing our understanding of algorithms as we start our new unit on 'coding'.

In geography, we will be starting a new enquiry question; 'would our school field be a good place for a castle?'. This will involve us exploring what castles are like, what they were used for and deciding if our school field would make the perfect place to build one.

In PSHE, we are starting a new puzzle piece called 'Relationships'. Through this puzzle piece we will be learning all about who is in our family, who our friends are, people who help us and what makes positive relationships.

This half term in PE will be focusing on athletics, dance and mindful movement. We will be learning new skills and applying them to help us gain strength, balance, stamina and flexibility.



Wishing you all a lovely first week back,

Mrs Herman, Mrs Hill, Miss Marcazzo and Mrs Smith



Year 2 Weekly Information w/b 21.4.25

Welcome to the Summer Term

As the weather gets warmer, please ensure children have sunscreen applied before school.

Please bring a hat and a plastic water bottle with a sports cap lid – both named.

Thank you

Sleepover- clothes and water bottles

We are looking forward to our sleepover this Friday. The children should come to school at 7.00pm in their own clothes, bringing pyjamas in their bag. They will leave their water bottle at school that day so that they have it ready for the evening. If you haven't completed the [Google Form](#) with your child's information, please do so as soon as possible.

Sleepover – packing

Please ensure your child has practised rolling up their mat and putting their sleeping bag away so that they are able to do this independently in the morning. A really big bag (IKEA type) is helpful for them to put everything in to.

Many thanks for your support with this.

In English this week, we will be starting to learn how to write descriptively. We will be starting a new book called 'Inside the Villains', by Clotilde Perrin. We will be learning how to use our senses when describing a character. We will be learning about how to effectively use adjectives and expanded noun phrases.

In reading, we will be starting a new book 'The Giraffe, The Pelly and Me' by Roald Dahl. We will be reading in pairs and focusing on fluency and expression. We will then read in pairs to the class where we will 'perform' what we have been reading as a class. We will be focusing on how reading with expression can convey emotion.






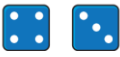

The spelling quiz assignment will be set on Tuesday. This week's assignment will be to spell words with irregular spelling patterns, e.g. bath, plant, father, last, path, past, grass, class and pass.

This week's spelling quiz words are below.

For review:	full, no, push
Might be new:	after, find, hour
Can you do?	continue, complete

This week in Fluency Bee –

Below you will find some examples of how we will be exploring doubles and near doubles.

w/b 22.4.25	<p>Use the inverse Double and 1 more</p>  <p>Double 5 and 1 more is <input type="text"/></p>  <p>Double <input type="text"/> and 1 more is <input type="text"/></p> <p>Double <input type="text"/> is 6</p> <p>Half of <input type="text"/> is 4</p>
w/b 28.4.25	<p>Recognise near doubles Calculate with near doubles</p> <p>Circle the near double in each set.</p> <div style="display: flex; justify-content: space-around;"> <div style="text-align: center;"> <p>1</p>   </div> <div style="text-align: center;"> <p>3</p>    </div> </div> <p>Complete the calculations.</p> <div style="display: flex; justify-content: space-around;"> <div style="text-align: center;"> <p>1</p> $4 + 4 = \square$ so $4 + 5 = \square$ </div> <div style="text-align: center;"> <p>3</p> $9 + 9 = \square$ so $9 + 10 = \square$ </div> </div>

In maths this week, we will be starting our unit on mass, capacity and temperature. We will start by comparing the mass of different objects, then we will measure in grams and then in kilograms.

In science this week, we will be starting our new enquiry question of 'What do living things need to survive?'. We will start by thinking about what the local environment looks like in spring. We will know that in spring, plants start growing new leaves; that flowers bloom on many plants in spring; that many deciduous trees grow new buds and blossoms and that warmer temperatures and sunlight help plants grow in spring.

In PSHE this week, we will be introducing the 'Zones of Regulation.' This is a strategy we are going to be using to explore and talk about different emotions we feel, which can be classed into four different 'zones.' We will be introducing the zones, and exploring different emotions.

2W have been selected to take part in a statutory 'Technical Pre-Test' for the Standards and Testing Agency. The children will complete a series of tasks as part of the trial. This will provide the Standards Testing Agency with valuable information about test administration and format. The results of the tests will not be reported to the school and are kept confidential. We will be explaining to 2W what they are doing in an age appropriate way so as not to worry them.

Have a lovely week,

Mrs Jayasuriya, Mrs Williams and Miss Wood



Year 3 Weekly Information w/b 21.4.25

Recorders

If you would like to practise at home, Mrs Rutherford recommends practising 'Popular' on the recorder, using the notes G, A and B.

<https://www.youtube.com/watch?v=IBLhsMmj5KM>

Golden Hinde

As we head towards our class trips to the Tower of London and Golden Hinde next half term, we've included our small steps to a successful trip below.

Homework

This week, the children will be set a My Maths homework task to complete during the week. It will be available from Thursday to Tuesday.

This week's task is revisiting adding and subtracting ones, tens and hundreds from earlier in the year.

In English this week, we are going to be immersing ourselves in texts linked to our new genre of writing, non-chronological reports. We are going to be looking at a range of different reports to help us build an understanding of the structure and language used in non-chronological reports.

These are the spelling words for this week (for the quiz on 29.4.25). We would appreciate it if you could please help your child to practise them at home.

For review:	could, every, father
Might be new:	bicycle, material, natural
Can you do?	centre, experience

In maths this week, the children are going to be comparing mass using the terminology of lighter, heavier and the same. We will use balance scales for comparisons and look at masses written in kg and g and compare them with the symbols $<$, $>$ and $=$. Then, we will use methods we are familiar with to add and subtract mass. Finally, we will turn our attention to capacity and volume and end the week with some practical measuring.

Coming up soon in our arithmetic Fluency Bee sessions:

w/b 21.4.25	Arrays The 8 times table Use known facts Times Tables Rock Stars
w/b 28.4.25	Divide by 8 (group) Divide by 8 (share) Calculate with 8s Times Tables Rock Stars

In the wider curriculum, in science we are going to be beginning a new enquiry question related to magnets. This week, we are going to be exploring whether magnets can attract something from a distance.

In PSHE, we are starting a new jigsaw piece on relationships and will be discussing our families this week – who is part of our family and what responsibilities do they have?

Our games and PE learning this half term will be cricket and athletics outdoors and dance indoors. All three classes will now have their games and PE lessons on a Wednesday afternoon and will rotate through the three activities; cricket, athletics and dance.

Is your child (or yourself) anxious about the Golden Hinde residential trip?

Here's some steps you can take starting now to get them ready for a fun trip. Don't leave it all to the last minute, especially staying away from home. Doing activities plenty in advance allows you the chance to take small steps and try something again if it doesn't go to plan first time around.

You know your child best, so adapt their preparation to how much (or little) they need in advance.

They're worried about staying away from home...
Maybe they've already been to the Year 2 sleepover last year.
Try play dates that extend to getting ready for bed and a late film. This replicates the Year 2 Sleepover and helps build confidence with getting changed before bed on the Golden Hinde.
Spend a night away from home at a relative's house. You could turn this into two steps by staying yourself for the first time.
Spend a night away from home at a friend's house.
You could have a night sleeping on roll mats and in sleeping bags, too (in their room, downstairs at home, at a friend's house), if they're worried about not having a bed to sleep in.

They're worried about it being a big trip...
Have a local day trip together that involves some walking.
Look at some pictures of the Golden Hinde and Tower of London on the internet.
Have a day trip to London together – you could even find the Golden Hinde and walk (30 minutes approx.) to the Tower of London.

Golden Rules...

- Keep opportunities for discussion open so they know they can talk to you.
- Talk about the trip positively yourself. If you tell them or show them that you're worried, they'll pick up on that and please don't promise they can go home during the trip. We will always call you if needed but once that seed has been planted they won't forget.
- Emphasise all the fun they're going to have and what a great opportunity it is. So many people have never slept on a ship and they get to do it!
- Don't write them notes to look at on the trip. You can tell them you missed them and give them a big hug when they get back.
- Pack for the trip together. They'll know what they've got with them and how to fit it all back in their bag at home time.
- Talk to your child's class teacher about any concerns. We're very experienced with this trip and other residentials and are ready to support your child to have a great time away.

We'll be preparing them at school, too, by talking about what we will do on the trip, looking at photos, discussing how we can all support each other and answering as many of their questions as possible in the lead up. All the staff are already looking forward to a great adventure together.

Have a great week,

Mrs Davis, Miss Jenkins, Mr Loughlin and Mrs McClelland



Year 4 Weekly Information w/b 21.4.25

Welcome to the summer term!

We hope you had a fantastic Easter break. We are looking forward to another great term with the children including sports afternoon and our trip to High Ashurst.

PE Kits

Please can we ask that the children have their PE kits with them every day. Thank you for your support.

TTRS Battle winners!

A very well done to 4C who have won the TTRS class battle! They have earned themselves a non-uniform day on **Friday 25 April**.

In English, the children will begin a new sequence of lessons on suspense stories. This week they will learn about what are suspense stories and how authors create suspense. In reading, they will begin our latest class book *Kensuke's Kingdom* by Michael Morpurgo.

This week's spelling quiz words (taken from the Y4 Summer term list) will be:

For review:	although, difficult, notice
Might be new:	appear, circle, decide
Can you do:	aggressive, correspondence

In maths this week, the children will continue with their work on decimals that they began work on before the Easter holidays. The lessons this week will look at how tenths can be represented on a place value chart and a number line. Later on, in the week, we will revisit our understanding of what happens to a number when you divide it and apply this knowledge to dividing a number by 10.

Coming up in speedy maths (*indicates new learning):

w/b 21.4.25	Know all tables to 12 x 12 at speed. Use tables facts to work out related x at speed. Add three 1-digit numbers at speed.
w/b 28.4.25	*Know division facts for 11x table at speed. Know pairs of numbers to 100. Give change from £1 at speed Know pairs of tens to 180 Add three 1-digit numbers at speed.

In science this week, we will be learning about how different matters can change state.

In PSHE, the children will be introduced to their new puzzle piece 'relationships'. In this first lesson, we will be thinking about what jealousy is and what this can look and feel like in different situations.

In art, the children will begin the new enquiry question How is symbolism used in paintings? We will be exploring different art mediums and looking at how symbolism has been used.

Have a great week.

Miss Croucher, Mr Vidal and Mr Gordon



Year 5 Weekly Information w/b 21.4.25

Welcome Back

We hope you enjoyed a restful Easter holiday and you are feeling refreshed and ready for the Summer term. We have some fabulous weeks ahead, including our Sports Afternoon (16.5.25) and a trip to the Buddhapadipa Temple (22.5.25). More details to follow...

Homework

Homework is due every Tuesday (although not this week as it's the first week of term). Spelling Shed and MyMaths is available from Tuesday and due to be completed by Tuesday the following week. Reading should be daily and TTRS as often as possible, please!

PE Kits needed on Mondays

This term we will be having PE and Games on Mondays.

Please ensure you have your **full PE kit** in school with you **every Monday**. It will be sent home on Fridays as usual.

In English, we will be writing to entertain, with a focus on science fiction writing for this half term. To link with our writing, we will be reading 'Boy in the Tower' by Polly Ho-Yen. This is a story about friendship, loyalty and courage, in which the main character Ade (pronounced 'Ad-ee') becomes trapped in his tower block by an unsuspected menace.

The children will be having a spelling quiz on Tuesday 29 April on these words:

For review:	different, experience, height
Might be new:	average, desperately, immediately
Can you do?	availability, rhyme

In maths we will be continuing to look at angles. Building on our knowledge that an angle is a measure of turn (or rotation), we will learn how to accurately use a protractor to measure the angles in degrees.

Our speedy maths will be:

w/b 21.4.25	Know all tables to 12 x 12 including division facts Convert cm to mm and vice versa Convert L to ml and vice versa Add and subtract 2-digit and 3-digit numbers Add three tens
w/b 28.4.25	Know all tables to 12 x 12 including division facts Convert cm to mm and vice versa Convert L to ml and vice versa Add and subtract 2-digit and 3-digit numbers Add three tens

In science, we will continue investigating how a material changes state. This week we will be thinking about how we can separate mixtures.

In geography, we will be looking at our local area while we consider our new enquiry question, 'How has land use changed over time at Box Hill?'

In art this term we will be learning how artists create a realistic portrait. This week we will think about proportion and how to use a wooden model to draw the human body.

In PSHE, we will be thinking about relationships and how to make respectful choices. We will be introducing Zones of Regulation as a way of understanding our own emotions and those of others.

Have a wonderful week,

Mrs Temlett, Miss Penn and Mrs Beadle



Year 6 Weekly Information w/b 21.4.25

NCT Revision

Should your child wish to do some revision ahead of the National Curriculum Tests (NCTs), here are some useful websites:

<https://www.bbc.co.uk/bitesize/articles/zbh892p>

https://www.cgpbooks.co.uk/resources/ks2-sats-online-10-minute-tests?srsId=AfmBOoqz2RPA_Ls9nHkdANL_GDRy6AFa-YmNoC-7bRmNPqIQogr3_mmck

Please help us prepare for test week – names

The children must write their full legal name on their NCT papers, including middle name/s, exactly as they appear on our register. We would be grateful if you could support us by practising these at home.

Please help us prepare for test week – DOBs

The children must also write their date of birth on their NCT papers. We would be grateful if you could ensure that your child knows their exact birth date and how to write it in either words or numbers.

We hope you all had a good break and it is fantastic to welcome the children back to school for the summer term.

In English this week, we will be revising grammar, punctuation and spelling rules that we have learnt throughout KS2. We will also be applying our reading skills, particularly retrieval and inference, to an unfamiliar text. We will be starting our new book, 'Skellig' by David Almond, initially looking at the cover, blurb and opening paragraph to predict what the story might be about.

In maths, we will spend the week looking at area, perimeter and volume of shapes. In problem solving, we will revise time-related problems by looking back at old test questions related to reading analogue and digital clocks, understanding the 24-hour clock and calculating lengths of time.

Please encourage your child to practise these words for next week's spelling quiz, which will take place on Tuesday 29 April:

For review:	accompany, category, competition
Might be new:	conscience, guarantee, interfere
Can you do?	acceptance, colleague

In history, we will be introducing our new learning question, 'Who were the ancient Egyptians?'. We will look at the timeline of Ancient Egypt and how long it lasted, being broken down into different periods.

In PSHE this week, we will be introducing the 'Zones of Regulation'. This is a school-wide strategy that explores our emotions, recognising them and helping us to discuss and regulate them.

Going forward, we will use our learning to categorise ourselves into one on the four zones each day. The newsletter before Easter outlined the zones and what each one meant.

Have a lovely week,

Mrs Bowe, Ms James, Miss Marcazzo, Miss Swann and Mrs Waldron