



For your calendar:

**Class Open Time - YR – Y6
8.35am – 8.55am**

Option 1 – Wednesday 29.1.25
or
Option 2 – Friday 31.1.25

**Monday 3.2.25
8.45am – 9.45am**

Coffee morning for families whose children have a Special Educational Need or Disability (SEND)

Coming up soon:

January		
Wednesday 29.1.25	8.35am – 8.55am	YR – Y6 Class Open Time Option 1 Please pick one of the two options, not both
Wednesday 29.1.25	8.55am – 9.30am	5T's Class Assembly for Parents/Carers in the Hall
Thursday 30.1.24	8.15am – 4.30pm	2B Parent/Carer Teacher Consultations – Rescheduled from the autumn term
Thursday 30.1.25	8.45am – 9.30am	5P's Class Assembly for Parents/Carers in the Hall
Thursday 30.1.25	-	Second hand uniform donation day – please drop in any uniform you no longer need
Thursday 30.1.25	7.00pm – 8.00pm	Volunteers needed to sort the donated second hand uniform at school please
Friday 31.1.25	8.35am – 8.55am	YR – Y6 Class Open Time - Option 2 Please pick one of the two options, not both
Friday 31.1.25	8.55am – 9.30am	5B's Class Assembly for Parents/Carers in the Hall
February		
w/b Monday 3.2.25	-	Last week of Internal clubs
w/b Monday 3.2.25	-	YR – Y6 Bigfoot Theatre visit – Online safety
Monday 3.2.25	8.45am – 9.45am	Coffee morning for families whose children have a Special Educational Need or Disability (SEND)
Wednesday 5.2.25	8.45am – 9.30am	2W's Class Assembly for Parents/Carers in the Hall
Thursday 6.2.25	8.45am – 9.30am	2J's Class Assembly for Parents/Carers in the Hall
Friday 7.2.25	8.45am – 9.30am	2B's Class Assembly for Parents/Carers in the Hall
Friday 7.2.25	-	PTA Smarties fundraiser launches
Friday 7.2.25	7.00pm	PTA Wine Tasting Evening

Reminders for you:

Thursday 30.1.25

PTA Second Hand Uniform Donation day – please drop off to the office during the school day.

From 7.00pm – 8.00pm we are looking for volunteers to help sort the donated uniform.

Class Open Time – YR to Y6 – East Gate

We offer two options for parents/carers to attend, please only attend one of them.

If you are **not** attending, please let the other parents/carers go through the gates first before saying goodbye and letting your child go. This is to help us make sure unaccompanied children get through the gate safely.

Internal Clubs

Please note that w/b 3.2.25 will be the last week of internal clubs.

After half term, clubs will start w/b 24.2.25. If you do not receive an email by 6.00pm on Friday 7 February, then your child has not been successful this time in securing a place.

Golden Jumpers

If your child has had the Golden Jumper and it is still at home, please could this be returned to the office as soon as possible. We have quite a few missing so would be grateful for a swift return. Thank you.

PTA Wine Tasting Event

There are still tickets available for the upcoming [Wine Tasting Event](#) taking place on Friday 7 February. Please book via the PTA Events page. Without more take up, this event may not be viable, so come along and enjoy a relaxed evening and spread the word to bring a group of friends along.



Year 1 Weekly Information w/b 27.1.25

Named Items

Please check that all items are named when they come into school. We have a large pile of lost property that has no name.

Please could you also check PE kits for other children's items as they often end up there.

Class Assemblies

Year 1 have now begun practising for their class assembly. Please help them practise their lines at home – you will find these in their Learning Journals!

Please note the date of your child's class assembly below:

1H – 12.2.25
1S – 13. 2. 25
1BH – 14. 2. 25

Year 1 Spelling Words

Can you write these words in a sentence?

Said
Could
Come

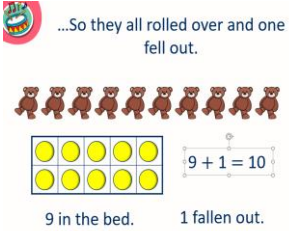
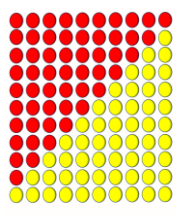
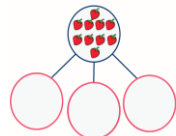
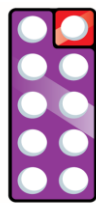
Remember to include a capital letter, full stop and clear finger spaces.



In maths this week, we will be looking at place value up to 50. In this small step, children count

forwards and backwards between 20 and 50 chanting games, such as "I count, you count", give children the opportunity to count from different starting points alongside their peers. Number tracks and half hundred squares are useful representations to support children counting up to 50. When counting on a half hundred square, they will recognise the convention of moving to the next row after reaching a multiple of 10.

This week in Fluency Bee

<p>w/b 27.1.25</p>	<p>Bonds to 10 (10 in the bed) Bonds to 10 (pattern spotting) Composition of 10 on a part-whole model How many more to make 10?</p> <div style="display: flex; justify-content: space-between; align-items: flex-start;"> <div style="width: 30%;">  <p>...So they all rolled over and one fell out.</p> <p>9 in the bed. 1 fallen out.</p> <p>$9 + 1 = 10$</p> </div> <div style="width: 30%;">  <p>Can you see a pattern?</p> <ul style="list-style-type: none"> $10 + 0 = 10$ $9 + 1 = 10$ $8 + 2 = 10$ $7 + 3 = 10$ $6 + 4 = 10$ $5 + 5 = 10$ $4 + 6 = 10$ $3 + 7 = 10$ $2 + 8 = 10$ $1 + 9 = 10$ $0 + 10 = 10$ </div> <div style="width: 30%;">  <ul style="list-style-type: none"> 2 is a part. 4 is a part. 4 is a part. 10 is the whole. </div> </div> <div style="text-align: right; margin-top: 20px;">  <p>$10 = 9 + 1$</p> </div>
------------------------	--

In PSHE, we will be continuing our puzzle piece of 'Changing Me'. This week we will be looking at how girls and boy's bodies are different and how these may change as they get older. As part of a school's safeguarding duty, pupils are taught the correct words for private parts of the body (those kept private by underwear: vagina, anus, penis, testicles, vulva). They are also taught that nobody has the right to hurt these parts of the body. Change is discussed as a natural and normal part of getting older which can bring about happy and sad feelings.

In science, we will be identifying the main parts of a tree and getting crafty as we work in groups to create collaged tree diagrams.

In DT, we will be designing four appealing hand puppets for children in Reception. We will be thinking about their features, including eyes, nose, mouth and ears.

In RE, we will be continuing our learning about Shabbat in preparation for our trip to the Synagogue.

In computing, we will be continuing to explore mazes as we debug and extend our algorithms. We are getting pretty good at programming, now!

In geography, we will be learning about the country of Peru. We will be finding out where in the world Peru is, using maps and learning more about what it might be like there.

Have a lovely week,

Mrs Herman, Miss Marcazzo, Mrs Hill and Mrs Smith



Year 2 Weekly Information w/b 27.1.25

Class Assemblies

Last week the children brought home their lines to learn for their class assemblies – please support them with learning these so that they can say them loudly, clearly and with expression. Below are also the links for the songs if they wish to practise these at home:

Continents

<https://www.youtube.com/watch?v=KiXjGFOzY3c>

Oceans

<https://www.youtube.com/watch?v=X6BE4VcYngQ>

1666

<https://www.youtube.com/watch?v=J5eVIKWSHAA>

(including learning the sign language)

Thank you as always for your continued support.

Science

Thank you so much for the unhealthy and healthy plants which were sent into school last week – the children enjoyed looking at and discussing them. We will be planting some seeds to observe germination this week. If you have any clean plastic food packaging trays we would be grateful to receive them. Many thanks for your support with this.

Maths

To support the children with their learning in maths, it would be great if they could practise counting amounts of money, starting with the highest value coin or note. Keep the pounds and pence separate, saying the total amount as, for example, £2 and 53p. Also, can they find the same amount in different ways, using different coins or notes?

In English this week, we will be starting to plan a letter to Duncan to complain about how we, as crayons, have been over used! We will decide together what we are complaining about and then plan what we will write to Duncan, thinking carefully about the different types of sentences we have learnt about. We will then complete our own plan which will help us with our letter.

In reading, we will be reading a range of books and discussing them. We will also be learning our lines for the class assembly and practising reading them with expression.

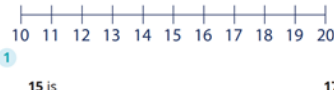



The Spelling Shed assignment will be set on Tuesday and 5 Spelling Bee assignments are to be completed by the following Tuesday.

In Spelling Shed this week the children will be learning how to spell words where 'er' and 'est' is added to words ending in 'y'. e.g. happier, happiest, angrier, angriest, drier, driest etc.

This week's spelling quiz words are below. The spelling quiz will be completed on Tuesday 4.2.24 in the Learning Journal.

For review:	love, school, she
Might be new:	kind, poor, sugar
Can you do?	notice, probably

This week in Fluency Bee – below you will find some examples of how we will be exploring comparison of numbers to 20.

<p>w/b 27.1.25</p>	<p>Order numerals Greater than or less than</p> <p>Greater than or less than?</p>  <p>15 is _____ 17</p> <p>Write the numbers in order from smallest to greatest.</p> <p>1</p> 
<p>w/b 3.2.25</p>	<p>Empty number lines</p> <p>Write 5, 10 and 15 in the correct place on the number line.</p>  <p>Write 4, 16 and 19 in the correct place on the number line.</p> 

In maths this week, we will be finishing our unit on money. We will be solving two step problems, involving finding the total of money; finding the difference between amounts; calculating change and a combination of all three within the same question.

In science this week, we will be learning about germination, knowing that it is when a seed starts growing. We will know that seeds need water and warmth to germinate; that they do not need light to start growing and that seeds have stored food to begin their growth. We will set up a simple test so that we can observe seeds germinating.

In geography this week, we will learn about the features of coastal areas such as cliffs, harbours, beaches and sea side towns. If you have any pictures of any of these that you have visited in the UK we would love to see them and add them to our display.

In DT, we will be designing our very own pizza! We will talk about what makes a good pizza, and the different toppings we could have, and what they taste like.

On Tuesday 28 January we will be having a visit from the Surrey Fire and Rescue Service who will be conducting workshops with each class. They will be discussing fire safety and making some comparisons between fire safety now and with the Great Fire of London.

Have a lovely week,

Mrs Jayasuriya, Mrs Williams and Miss Wood



Year 3 Weekly Information w/b 27.1.25

Class Open Time

This week there's a chance to come in and see what your child has been working on:

Option 1: Wednesday
29.1.25
8.35am – 8.55am

or

Option 2: Friday 31.1.25
8.35am – 8.55am

Battle of the Bands

We have a class Times Tables Rock Stars battle this week. There is a 30 minute daily limit. Good luck to all three classes!

FEATURING

3J, 3L, 3MD

07:00 28 January 2025 - 18:00 30 January 2025

* ANSWER AS MANY QUESTIONS AS POSSIBLE *
PLAY IN ANY GAME TYPE * THE WINNING CLASS
WILL HAVE THE HIGHEST NUMBER OF CORRECT
ANSWERS PER PUPIL * ASK YOUR TEACHER FOR
FULL DETAILS AND RULES *

Homework

This half term, the children's homework includes:

w/b:	Homework
27.1.25	My Maths
3.2.25	Spelling Shed

Spelling Shed: Tuesday to Tuesday
My Maths: Thursday to Tuesday

In English this week, the children will be writing a persuasive letter to Mrs Hill and the Eco Warriors to persuade the children of Stamford Green to reduce the plastic pollution in our school. We will be using a range of persuasive devices to make a convincing argument, such as rhetorical questions and emotive language. In our letter we will focus on paragraphs – ensuring that we address one main issue and solutions related to that issue within the paragraph.

Here are this week's spelling quiz words (for the quiz on 4.2.25). We would appreciate it if you could please help your child to practise them at home.

For review:	whole, would
Might be new:	describe, ordinary, actual
Can you do?	particular, favourite, heart

In maths this week, we are going to be working on multiplication of 2-digit by 1-digit numbers. We will be using different representations of numbers to look at partitioning the 2-digit number before multiplying the separate parts.

$$32 \times 5$$

Tens	Ones
10 10 10	1 1
10 10 10	1 1
10 10 10	1 1
10 10 10	1 1
10 10 10	1 1

$$\begin{array}{c}
 \textcircled{32} \times 5 \\
 \begin{array}{cc}
 \textcircled{30} & \textcircled{2} \\
 \downarrow \times 5 & \downarrow \times 5 \\
 150 & + 10 \\
 \hline
 160
 \end{array} \\
 32 \times 5 = 160
 \end{array}$$

Coming up soon in our arithmetic Fluency Bee sessions:

w/b 27.1.25	Bonds to 100 (10 frame) Bonds to 100 on a number line Missing numbers Times Tables Rock Stars session
w/b 3.2.25	Add 1-digit numbers Subtract 1-digit numbers Add and subtract teen numbers

In the wider curriculum, in art we will be learning about Barbara Hepworth and about her incredible sculptures. We'll investigate what her inspirations were and will respond to her work in different ways.

In history, we will be learning who the Anglo-Saxons were and how they established kingdoms across Britain and ruled for nearly 600 years. We will learn how they brought with them their own language and introduced new laws, customs and religion.

In PE, we will continue to develop our tag rugby skills with a focus on working as a team and defending efficiently.

In computing, we will be learning about how we can stay safe when using email.

In science, we will be learning in more detail about what leaves do for a plant. At the end of the lesson we will be answering these true or false questions to recap our learning:

True or false?

- Leaves lose water through stomata.
- Leaves can make food for the plant even without sunlight.
- Stomata are found on the stem of a plant.
- Chlorophyll gives leaves their green colour.

Have a great week,

Mrs Davis, Miss Jenkins, Mr Loughlin and Mrs McClelland

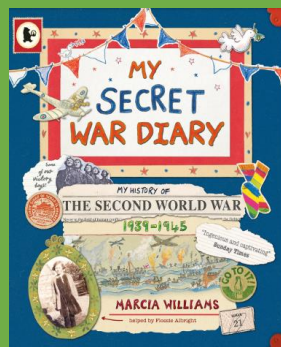


Year 4 Weekly Information w/b 27.1.25

Break time snack

Just a reminder that break time snacks should only be fruit or vegetables.

We recommend...



Soup making

Please look out for information in your child's Learning Journal about ingredients they will need to make soup in the week beginning 10 February.

Thank you for your continued support.

In English, the children will be creating ideas for diary entries based on evacuees and soldiers in WW2. They will then plan and write diary entries as a class. In reading, we will continue the *Iron Man* with a focus on retrieving key information from the text.

This week's spelling quiz words (taken from the Y4 Spring term list) will be:

For review:	build, exercise, imagine
Might be new:	calendar, enough, possession
Can you do:	category, environment

In maths this week, the children will finish their unit of work on multiplication and division. At the start of the week, the children will be using their number knowledge to work out division using three and one digit numbers. We will then use all we have learnt since the Christmas holidays, to answer questions including word problems. At the end of the week, we will have a quiz to help us remember all we have learnt.

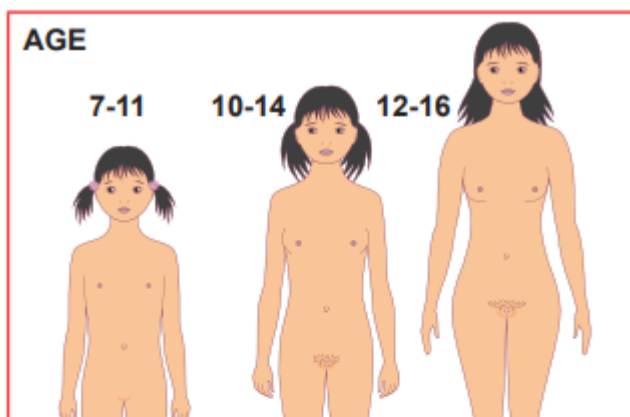
Please can you support your child with completing Times Table Rock Stars each night. It is also important the children complete a soundcheck at least once a week so we can track areas the children need support in.

Coming up in speedy maths (*indicates new learning):

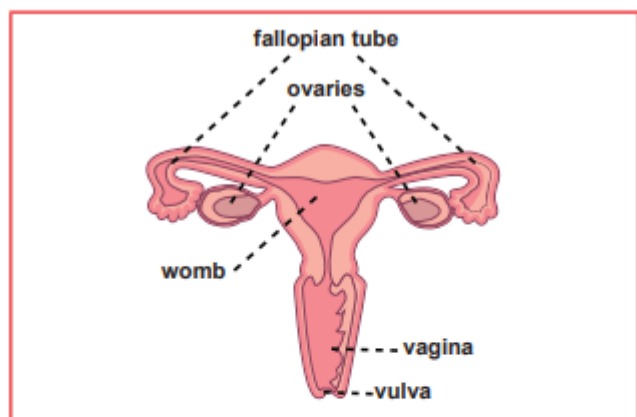
w/b 27.1.25	*Know pairs of tens to 180 Know simple equivalent fractions. Know all tables mixed at speed. Know simple equivalent fractions Add and subtract pairs of 2-digit numbers at speed.
w/b 3.2.25	*Convert cm to m and vice versa Continue simple number patterns Know all tables mixed at speed. Know 2x, 3x, 4x, 5x, 6x, 10x tables and related division facts at speed. Know pairs of numbers to 100. Know pairs of tens to 180

In science this week, children will be considering how changes in the environment can affect living things. How might climate change affect the planet and what can we do to minimise its effects?

In PSHE, the children will learn about what happens to girls during puberty. In this lesson, the children will be using resources such as:



A girl reaches puberty usually between the ages of 10 and 14, though it can be earlier or later than this. At this time she starts to produce one egg every month from her ovaries.



Many thousands of eggs are stored in the ovaries. A woman will release one each month for most of her adult life. Most will not be fertilised, so they pass down the tube into the womb and out of the body through the vagina.

In DT, the children will be learning about when different fruits and vegetables are in season and easiest to buy in the supermarket. We will be completing market research on different soups that are currently available and then planning our recipe in groups ready to make in the following lesson.

In RE, we will discuss what Christians believe Jesus teaches about how citizens of the Kingdom of God should live their lives.

In geography, children will be looking at Antarctica. Where is it? Why is it important and why do people visit such an unforgiving place?

As part of our learning about WWII, children in 4G are bringing in pictures of relatives who lived through the war to go on their class wall display. If your child would like to contribute a picture, Mr Gordon would love to see them!

Have a great week.

Miss Croucher, Mr Vidal and Mr Gordon



Year 5 Weekly Information w/b 27.1.25

Golden Books

We hope you enjoyed looking at your child's work in their Golden Books.

After you have written a message on the sticker in the book, please ensure it is returned to school for safekeeping.

All books should be sent back to school by the end of the week, please.

Clubs

We still have room in Choir Club (Tuesdays) and Cross Country Club (Fridays).

If your child would like to sign up, please let us know through parents@.

Choir club will be performing at the music evening at the end of February – please keep an eye out for the Music Evening letter which will follow shortly.

Class Assemblies

The children are very excited to perform their assemblies to you this week. The doors will open to parents/carers at 8.45am and assemblies will start at 9am.

Wednesday – 5T
Thursday – 5P
Friday – 5B

We look forward to seeing you there!

In English this week, we will be developing our skills of writing a non-chronological report as we learn how to plan and create our own glossary as part of our shared write. In reading, we will continue to look at Romeo and Juliet and increase our knowledge of Shakespeare and the Globe Theatre. This week, in class and on Spelling Shed, we will look at words with suffixes where the base word ends -fer, e.g. **difference**.

The children will be having a spelling quiz on Tuesday 4.2.25 on these words:

For review:	centre, separate, through
Might be new:	competition, develop, forty
Can you do?	achieve, unfortunately

In maths, we will be consolidating our unit of fractions then moving onto decimals. We will use knowledge from previous learning to add and subtract decimals within 1 whole using known

facts. We will move on to using a formal method to add and subtract decimals later in this block.

Our speedy maths will be:

w/b 27.1.25	Add p to £&p. Give change from £1 at speed Convert m to km and vice versa Know pairs of hundreds to 1000. Subtract 2-digit from 3-digit numbers Continue simple number patterns
w/b 3.2.25	Subtract p from £ Add and subtract pairs of 2-digit numbers at speed. Add and subtract 2-digit and 3-digit numbers at speed. Add p to £&p. Convert m to km and vice versa Convert L to ml and vice versa

In science and RSE, we will be learning about conception. This will be done in an age appropriate way as mentioned at the Welcome Meeting in July. You have the option to withdraw your child from the part of the PSHE lesson where we will discuss consent and alternative methods of conception such as IVF. Please email parents@ if you do not want your child taking part in this PSHE lesson. The focus is on the importance of relationships and appreciating how amazing it is that human bodies can reproduce in these ways. Here are some of the resources we will be looking at in class:

Conception: (kun-SEP-shun)

Resources and key vocabulary used in this lesson

- conception
- sexual intercourse
- fallopian tube
- embryos
- IVF
- contraception
- Fertilisation
- cervix
- pregnancy**

the sperm would travel up through the cervix

This is where **pregnancy begins**

In art, we will be learning how to use carbon paper to create a quick and effective skyline drawing, then adding texture and detail with fine line pen in the style of artist Stephen Wiltshire.

In history, we will be looking at the movement of people to and from Britain in the 1950's, focusing on the experiences of people from the Caribbean onboard The Windrush.

Have a wonderful week,

Mrs Beadle, Miss Penn and Mrs Temlett



Year 6 Weekly Information w/b 27.1.25

Cardboard Boxes for DT

In the coming weeks, we will be making a simple game to play with our Reception buddies. We'd be grateful if you could store any decent-sized cardboard boxes you have (eg cereal/shoe boxes) ready for this project. We will let you know when they need to be brought into school.

High Expectations

Last week, we talked to Year 6 about our expectations for behaviour, particularly around respecting adults, school spaces and property. We also held our first lunchtime extra homework session for children who had not done their homework. This focus on high expectations will continue.
Thank you in advance for making sure homework is completed at home.

Jewellery

The only jewellery that is permitted to be worn at school are small, plain stud earrings or agreed religious items. All jewellery must be removed for PE and games sessions for safety reasons.

In English this week, we will be creating a shared adventure story. We will contribute ideas and ensure we understand the structure, vocabulary and grammatical structures to create the sense of action and adventure.

In maths, our new topic is percentages. We will start by identifying simple percentages before moving onto looking at the similarities between fractions and percentages, and how to convert one to the other. We will also use the multiplying and dividing skills we learned last week to help us calculate simple percentages: for example, if we know how much 10% is, we can use this to help us calculate what 40% is. Our problem solving lesson gets us thinking about how to use decimals in real life examples.

The words for next week's Spelling Quiz (on 4.2.25) are listed below. Please help your child to learn them by practising every day.

For review:	average, correspond, opportunity
Might be new:	determined, nuisance, thorough
Can you do?	chauffeur, incidentally

In science, we will be continuing to learn about inheritance and the reasons we look similar, but not identical to, our parents. We will also be beginning to look at variation of characteristics and why this is important for species survival.

In geography, we will be learning about the layers of the tropical rainforest and the features of each tier. We will also be looking at the biome of the rainforest and understanding how the climate impacts the biome.

In games, we will continue to work our netball skills, focusing on using defending skills to gain possession. In PE, we will build on our initial focus on rhythm to perform Bhangra style motifs using rhythm and energy.

Continuing our 'Changing Me' work in PSHE, lessons for the next two weeks will cover:

Week beginning	Lesson theme	PSHE/RSE Learning
27.1.25	Adolescent friendships	I know myself well enough to maintain positive relationships with others whilst still keeping my own identity
3.2.25	Real self and ideal self	I am aware of the importance of a positive self-esteem and what I can do to develop it

The children have engaged with the recent PSHE learning with curiosity and maturity, asking insightful questions.

Mock tests

To help prepare the children for their upcoming National Curriculum Tests in May, please note that we will be sitting some mock tests during the weeks commencing the Monday 3 February and Monday 10 February. We will hold these mock tests in the spaces around school that we will use in May (eg the Hall or Club House). We will also provide readers and/or extra time for eligible children. The mocks are being organised in this way to help the experience feel more authentic and to make it less intimidating when they sit the actual tests in May. We will reassure the children in class and would really appreciate your support and encouragement at home. Thank you in advance.

Have a great week,

Mrs Bowe, Ms James, Miss Ozyakup, Miss Swann and Mrs Waldron.