



For your calendar:

w/b 13.1.25

Internal Clubs start and will run for 4 weeks.

Please click [here](#) to see the Clubs overview.

Friday 17.1.25 PTA Crazy Hair Day Anything goes!



Suggested £1.00 cash donation.
The PTA will be collecting the money at the East and West Gate on Friday morning.
Please wear school uniform as usual.

Coming up soon:

January		
w/b Monday 13.1.25	-	Golden Book Week
Wednesday 15.1.25	8.45am – 9.30am	4C's Class Assembly for Parents/Carers in the Hall
Thursday 16.1.25	8.45am – 9.30am	4V's Class Assembly for Parents/Carers in the Hall
Friday 17.1.25	All day	PTA's Crazy Hair Day
Friday 17.1.25	8.45am – 9.30am	4G's Class Assembly for Parents/Carers in the Hall
Friday 17.1.25	8.55am – 9.55am	PTA Class Reps Coffee Morning with Mrs Druce – Agenda: Spring term fundraising and spending plans
Tuesday 21.1.25	2.40pm or 3.10pm depending on your usual pick time until 3.30pm	YN Class Open Time – Option 1 Please pick one of the two options, not both
Wednesday 22.1.25	8.45am – 9.30am	3L's Class Assembly for Parents/Carers in the Hall
Wednesday 22.1.25	8.00pm	PTA Meeting at The Blenheim – All welcome
Thursday 23.1.25	8.45am – 9.30am	3MD's Class Assembly for Parents/Carers in the Hall
Thursday 23.1.25	12.30pm – 11.30pm	Y5 Young Voices visit to O2 Arena
Thursday 23.1.25	2.40pm or 3.10pm depending on your usual pick up time until 3.30pm	YN Class Open Time – Option 2 Please pick one of the two options, not both
Friday 24.1.25	8.45am – 9.30am	3J's Class Assembly for Parents/Carers in the Hall

Reminders for you:

Applications for YN and YR September 2025

Please remember that applications close on Wednesday 15 January 2025.

The Nursery application pack can be found [here](#).

For Reception, please follow the [link](#)

Friday 17.1.25

PTA Class Reps Coffee Morning from 8.55am – 9.55am

Wednesday 22.1.25

PTA Meeting at The Blenheim – all welcome.

8.00pm

Thank You

Thank you for all your support during our graded Ofsted inspection last week, which may have meant you took the time to complete a survey.

The report is being finalised by the lead inspector this week and it then has to be quality assured so we hope to be able to share the outcome with you before half term.



Year 1 Weekly Information w/b 13.1.25

5 Special Books

Have a look at our 5 special books for this half term



We read and re-read them throughout the half term. Children become familiar with them, learning the patterns and the language, and thinking deeply about what the stories mean.

Reading Challenge

Well done to all those children that completed the Christmas Reading Challenge.

We loved seeing what stories you read over the holidays.

Baby Pictures

In PSHE this half term, we will be learning about how we change as we get older. The children will be thinking about how they have changed since they were babies. Please could they bring in a baby picture of themselves by **Monday 20.1.25** as part of that week's PSHE lesson.

Please name the picture and put into an envelope so we can keep them safe!

In maths this week, the children will build on their learning from earlier in the year as they explore addition by counting on from a given number within 20. Children should begin to understand that addition is commutative (although they do not need to formally know the word), and that it is more efficient to start from the greater number than the smaller number. For example, when working out $1 + 13$, it is quicker to add 1 to 13 than to add 13 to 1.

This week in Fluency Bee

w/b 13.1.25	Composition of 8 and 9 on a part-whole model How many more to make 8? How many more to make 9? Bonds to 8
------------------------	--

How many more to make 8? **Have a think**

How many more to make 9? **Have a think**

8 is made of 4 and 4
4 and 4 make 8

6 + 2 = 8
8 = 6 + 2

4 + 5 = 9
9 = 4 + 5

2 and 6 make 8
1 and 7 make 8
0 and 8 make 8

In PSHE, we will explore what the word 'changes' means and how we change over time. We will look at different stages in the life cycle and how each stage means different changes.

In science, we will be identifying and classifying trees, having examined the difference between 'deciduous' and 'evergreen' species.

In RE, we will be continuing to learn about the Jewish festival of Shabbat. Shabbat is the Jewish Day of Rest. Shabbat happens each week from sunset on Friday to sunset on Saturday. During Shabbat, Jewish people remember the story of creation from the Torah where God created the world in 6 days and rested on the 7th day.

In computing, we will be continuing to learn about algorithms as we work to solve problems involving a greater number of direction keys. Let's hope our pupils can save Little Red Riding Hood!

In DT, we will begin to look into our enquiry question: How are fabrics joined together? We will be looking at what makes a successful hand puppet and begin to identify, gather and organise our ideas.

In geography, we will be thinking about our new enquiry question; 'What is it like for a child living in Peru?'. During the next few weeks, we will be making simple comparisons between what life is like for a child living in Peru and a child living in the UK as well as looking at the human and physical geography of Peru and how it is different to where we live,

Have a lovely week.

Mrs Blackler, Mrs Herman, Mrs Hill and Mrs Smith



Year 2 Weekly Information w/b 13.1.25

Science

This week we will be learning about seeds and bulbs. If you have any seed heads still in the garden, or any packets of seeds/bulbs you can spare, please would you send them in with your child on Tuesday so that the children have a variety to observe. Many thanks for your support with this.

Library Days

Please note any changes:

2B – Thursday
2J - Thursday
2W - Tuesday

Water Bottles

Please ensure that your child has a water bottle in school every day. The water bottle should be plastic (not metal) with a sports cap lid. It should also be clearly named.

In English this week, we will be continuing to learn about letters and how they are written. We will be focusing on different types of sentences. This will include command sentences, exclamation sentences and questions. We will be focusing on the features of these types of sentences and how to write them. We will also be focusing on the correct structure, word use and punctuation when writing the sentences.

In reading, we will be continuing to read the book 'The Dark' by Lemony Snicket. We will be continuing to practise our fluency and expression when reading.

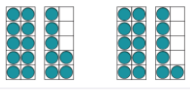
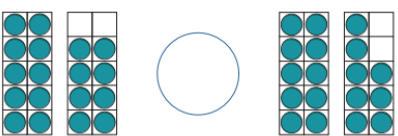
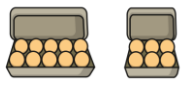
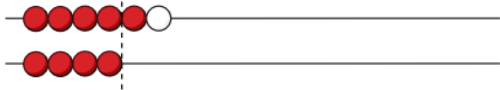
The Spelling Shed assignment will be set on Tuesday and 5 Spelling Bee assignments are to be completed by the following Tuesday.

In Spelling Shed this week the children will be learning how to spell words where 'es' is added to words ending in 'y'. e.g. tries, replies, cries, spies, flies etc.

This week's spelling quiz words are below. The spelling quiz will be completed on Tuesday (21.1.25) in the Learning Journal.

For review:	love, school, she
Might be new:	kind, poor, sugar
Can you do?	business, important

This week in Fluency Bee – below you will find some examples of how we will be exploring the different structures of addition and subtraction and how they are related.

w/b 13.1.25	<p>Missing numbers</p> <p>13 - <input type="text"/> = 10</p> <hr/> <p><input type="text"/> + 10 = 18</p>
w/b 20.1.25	<p>Compare representations Find the difference</p> <p>Tick the set which has more. Use <, > or = to complete the comparisons.</p> <p>1  1 </p> <p>2 </p> <p></p> <p>The difference between 6 and 4 is <input type="text"/></p>

In maths this week, we will be carrying on with our unit on money. We will be counting in pence, then in pounds and lastly in a mixture of pounds and pence. We will start with the highest value coins or notes. We will also be finding different ways of making different amounts.

In science this week, we will be thinking about how seeds and bulbs grow into plants. We will know that seeds and bulbs grow roots and shoots; that roots grow down to find water and nutrients; shoots grow up towards the light and that leaves form to help plants make food. We will be using our observational skills to draw a variety of seeds and bulbs.

In geography this week, we will be starting to learn about how coastal regions are geographically different to Epsom. This week we will be focusing on the difference between towns and villages.

In DT we will be learning about where food comes from. We will discuss how some food comes from the ground, and some comes from animals. Also, we will look at how food is produced.

Have a lovely week,

Mrs Jayasuriya, Mrs Williams and Miss Wood



Year 3 Weekly Information w/b 13.1.25

Sikh Gurdwara Trip

Please note there has been a change to the date of our visit to the Sikh Gurdwara this term.

The trip will now take place on Wednesday 5.3.25.

Year 3 Class Assemblies

We're looking forward to our class assemblies next week:

3L: Wednesday 22.1.25

3MD: Thursday 23.1.25

3J: Friday 24.1.25

Homework

This week, the children will be set a My Maths task to complete during the week. It will be available from Thursday to Tuesday.

Internal Clubs

Internal clubs start this week. Please email Mr Loughlin through parents@ if your child would like to join Scatterball on a Thursday. This club is also now being offered to Year 4 as numbers allow.

In English this week, we are learning about different persuasive devices. We will learn about rhetorical questions, alliteration, emotive language, the power of three, modal verbs and exaggeration. Using these devices, we will write about persuading people to do various things, such as brushing their teeth.

Here are this week's spelling quiz words (for the quiz on 21.1.25). We would appreciate it if you could please help your child to practise them at home.

For review:	whole, climb, great
Might be new:	though, ordinary, describe
Can you do?	accident, heart

In maths this week, we be working on dividing by 8 and using the 8 times table. Towards the end of the week we will be drawing together all of our knowledge from our recent work on multiplying and dividing to look at the connections between the 2, 4 and 8 times tables. This half term, our problem solving lessons are focussing on the skill of looking at patterns.

This week, we'll be exploring the patterns involved with making squares from toothpicks:



Coming up soon in our arithmetic Fluency Bee sessions:

w/b 13.1.25	Divide by 3 (group) Divide by 3 (share) Calculate with 3s Times Tables Rock Stars session
w/b 20.1.25	The multiplication-division relationship Missing numbers Compare expressions Times Tables Rock Stars session

In the wider curriculum, in computing, we will be exploring how we can communicate using computers to receive and respond to emails (within the Purple Mash program).

In science we will be learning about the role of roots in a plant and examining different types of roots.

In art this week we begin learning about our new enquiry question, 'How do artists create abstract sculptures?' We will learn about how to use wooden guides to roll an even slab of clay and will use tools to incise and print into the clay.

We are continuing the 'Changing Me' puzzle piece in PSHE. This week, we will discuss whether certain changes apply to boys' or girls' bodies. The sheet below gives you an idea of the vocabulary and areas this lesson will cover:

I will grow taller	I will develop pubic hair between my legs	My chest and shoulders will get broader	My voice will get deeper
Hair will grow under my arms	Hair will grow on my legs	My breasts will grow	My penis and testicles will grow larger
I will grow hair on my face	My hips will widen	My feet will get bigger	My skin will get less smooth

Is your child (or yourself) anxious about the Golden Hinde residential trip?

Here's some steps you can take starting now to get them ready for a fun trip. Don't leave it all to the last minute, especially staying away from home. Doing activities plenty in advance allows you the chance to take small steps and try something again if it doesn't go to plan first time around.

You know your child best, so adapt their preparation to how much (or little) they need in advance.

They're worried about staying away from home...
Maybe they've already been to the Year 2 sleepover last year.
Try play dates that extend to getting ready for bed and a late film. This replicates the Year 2 Sleepover and helps build confidence with getting changed before bed on the Golden Hinde.
Spend a night away from home at a relative's house. You could turn this into two steps by staying yourself for the first time.
Spend a night away from home at a friend's house.
You could have a night sleeping on roll mats and in sleeping bags, too (in their room, downstairs at home, at a friend's house), if they're worried about not having a bed to sleep in.

They're worried about it being a big trip...
Have a local day trip together that involves some walking.
Look at some pictures of the Golden Hinde and Tower of London on the internet.
Have a day trip to London together – you could even find the Golden Hinde and walk (30 minutes approx.) to the Tower of London.

Golden Rules...

- Keep opportunities for discussion open so they know they can talk to you.
- Talk about the trip positively yourself. If you tell them or show them that you're worried, they'll pick up on that and please don't promise they can go home during the trip. We will always call you if needed but once that seed has been planted they won't forget.
- Emphasise all the fun they're going to have and what a great opportunity it is. So many people have never slept on a ship and they get to do it!
- Don't write them notes to look at on the trip. You can tell them you missed them and give them a big hug when they get back.
- Pack for the trip together. They'll know what they've got with them and how to fit it all back in their bag at home time.
- Talk to your child's class teacher about any concerns. We're very experienced with this trip and other residentials and are ready to support your child to have a great time away.

We'll be preparing them at school, too, by talking about what we will do on the trip, looking at photos, discussing how we can all support each other and answering as many of their questions as possible in the lead up. All the staff are already looking forward to a great adventure together.

Have a great week,

Mrs Davis, Miss Jenkins, Mr Loughlin and Mrs McClelland



Year 4 Weekly Information w/b 13.1.25

Class Assemblies

Just a reminder Year 4 class assemblies will be on:
Wednesday 15.1.25 – 4C
Thursday 16.1.25 – 4V
Friday 17.1.25 – 4G

Scatterball Club

If your child would like to attend a Y3 and Y4 Scatterball club, please email Miss Croucher who will add your child's name to the register. This club will begin on Thursday.

Reminder

Just a reminder that homework is set on a Tuesday and checked by your child's class teacher the following Tuesday.

In English this week, the children will be learning the skills needed to write a diary entry including writing in the first person, using the past tense, and writing in chronological order. In reading, they will continue their new class book, 'The Iron Man', with a focus on explaining the text.

This week's spelling quiz words (taken from the Y4 Spring term list) will be:

For review:	imagine, length, often
Might be new:	possession, reign, straight
Can you do:	lightning, opportunity

In maths this week, the children will be continuing with their work on multiplication and division. We will be using the inverse of multiplication (division) to divide numbers by 10 and 100. We will be using the rule of moving the numbers one or two places to the right on a place value grid.

Please can you support your child with completing Times Table Rock Stars each night. It is also important the children complete a soundcheck at least once a week so we can track areas the children need support in.

Coming up in speedy maths (*indicates new learning):

w/b 13.1.25	*Know all tables mixed at speed. Continue simple number patterns Know pairs of numbers to 90. Add and subtract pairs of 2-digit numbers at speed.
w/b 20.1.25	*Know simple equivalent fractions Know all tables mixed at speed. Know pairs of numbers to 100. Continue simple number patterns

The children will be working on their speaking and listening skills developing their class assemblies. We can't wait to show you what we have been working on.

In PSHE, the children will continue with the 'Changing Me' jigsaw puzzle piece. This week, we will be learning about the inside changes that happen to our bodies as we grow older and go through puberty. During the lesson, the children will be using resources like the following:

On our journey to be adults, our bodies will change shape and grow bigger on the outside.

At the same time wonderful things are happening on the inside.

Boys have a bag of skin between their legs which holds the t_____

These grow bigger and start to make s_____, tiny seeds which are needed to start a baby.

When they are needed these seeds are released through the p_____

Inside a girl, low down between her hips, are two o_____

Stored inside these are lots of tiny e____

They start to be released, one at a time, into a tube that leads to the w____

This is a warm, safe space where a baby will grow if the egg joins with a sperm.

The womb is connected to an opening between the girl's legs by a passage called the v_____

Ovaries	Sperm	Vagina	Testicles	Eggs	Womb	Penis
---------	-------	--------	-----------	------	------	-------

In RE, we will be considering what Christians believe God's role as a ruler was and what qualities he had.

In geography, the children will begin their new enquiry question: who lives in Antarctica?

Is your child (or yourself) anxious about the High Ashurst residential trip?

Here's some steps you can take starting now to get them ready for a fun trip. Don't leave it all to the last minute, especially staying away from home. Doing activities plenty in advance allows you the chance to take small steps and try something again if it doesn't go to plan first time around.

You know your child best, so adapt their preparation to how much (or little) they need in advance.

They're worried about staying away from home...
Maybe they've already been to the Golden Hinde in Year 3.
Try play dates that extend to getting ready for bed and a late film. This replicates the Year 2 Sleepover and helps build confidence with getting changed before bed at High Ashurst.
Spend a night away from home at a relative's house. You could turn this into two steps by staying yourself for the first time.
Spend a night away from home at a friend's house.
You could have a night sleeping on roll mats and in sleeping bags, too (in their room, downstairs at home, at a friend's house), if they're worried about not having a bed to sleep in.

Golden Rules...

- Keep opportunities for discussion open so they know they can talk to you.
- Talk about the trip positively yourself. If you tell them or show them that you're worried, they'll pick up on that and please don't promise they can go home during the trip. We will always call you if needed but once that seed has been planted they won't forget.
- Emphasise all the fun they're going to have and what a great opportunity it is. So many people have never slept on a ship and they get to do it!
- Don't write them notes to look at on the trip. You can tell them you missed them and give them a big hug when they get back.
- Pack for the trip together. They'll know what they've got with them and how to fit it all back in their bag at home time.
- Talk to your child's class teacher about any concerns. We're very experienced with this trip and other residentials and are ready to support your child to have a great time away.

We'll be preparing them at school, too, by talking about what we will do on the trip, looking at photos, discussing how we can all support each other and answering as many of their questions as possible in the lead up. All the staff are already looking forward to a great adventure together.

Have a great week,

Miss Croucher, Mr Vidal and Mr Gordon



Year 5 Weekly Information w/b 13.1.25

Homework

The first homework of this half term is due on Tuesday this week (My Maths and Spelling Shed). Please make sure daily reading and times tables practise is being recorded in the Learning Journal.

The next TTRS Battle of the Bands starts on Tuesday – let's rock, Year 5!

PE kits

A reminder that children should bring their PE kits in on a Monday, even if their Games and PE lessons are scheduled for later in the week, please. During the cold weather, it is particularly important for children to have a school PE fleece.

O2 Young Voices

We've less than 2 weeks to go before Young Voices on Thursday 23.1.25.

Please note that children should not bring Prime water bottles or sweets on this trip. They will be confiscated.

More information about the final trip details will follow this week.

In English this week, we will look in detail how we can make our writing more informative, to do this we will be focussing on including parenthesis and subordinating connectives to our writing. We will be reading our class reading book, an abridged version of Shakespeare's Romeo and Juliet. This week in class and on Spelling Shed (this week's homework) we will look at the spellings of adverbs of time.

The children will be having a spelling quiz on Tuesday 21.1.25 on these words:

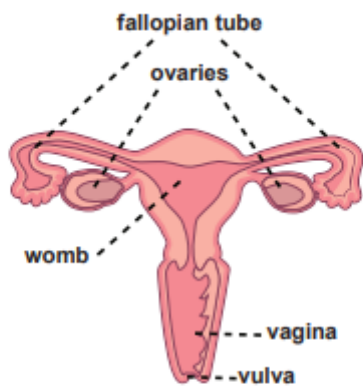
For review:	enough, separate, through
Might be new:	develop, forty, muscle
Can you do?	explanation, unfortunately

In maths, we will consolidate knowledge and understanding of division and begin to make decisions regarding the most efficient or appropriate methods to use in a range of contexts. We will also apply their knowledge of multiplication and division to solve problems.

Our speedy maths will be:

w/b 13.1.25	Subtract 2-digit from 3-digit numbers Add and subtract pairs of 2-digit numbers at speed. Know all tables to 12x12 including division facts at speed. Know pairs of numbers to 180. Convert cm to m and vice versa
w/b 20.1.25	Know all tables to 12x12 including division facts at speed. Subtract 2-digit from 3-digit numbers Convert L to ml and vice versa Use tables to work out related x and ÷ at speed.

In science this week, we will be thinking about how a girl's body changes during puberty. This will link with our PSHE topic of 'Changing Me'. The children will learn that puberty is a natural process that happens to everybody. Here are some of the resources we will be looking at in class:



Towel - 20cm long



Period pants



Tampon 6cm long

Many thousands of eggs are stored in the ovaries. A woman will release one each month for most of her adult life. Most will not be fertilised, so they pass down the tube into the womb and out of the body through the vagina.

Girls and women need to soak up the menstrual flow as it comes out of the vagina. They use either special absorbent period pants, an absorbent towel which they wear in their pants or a tampon which they insert into the vagina. These need to be changed regularly.

Next week we will be learning more about how boys' bodies change during puberty. The following week (w/b 27.2.25) we will be learning about conception. This will be done in an age-appropriate and sensitive way as mentioned at the Welcome meeting in July. You have the option to withdraw your child from the part of the PSHE lesson where we will discuss consent and alternative methods of conception such as IVF.

In art, we will be learning about the contemporary British artist, Stephen Wiltshire as we start our new enquiry question 'How do artists help us to see the world around us?'. We will learn how this neurodivergent artist uses his unique abilities to draw breath taking city skylines.

Our focus in history this term is the Windrush Generation. We will start by looking at their reasons for immigration and the vital role they played in rebuilding Britain after World War Two.

Have a wonderful week,

Mrs Beadle, Miss Penn and Mrs Temlett



Year 6 Weekly Information w/b 13.1.25

Star children

The Year 6 children were incredible ambassadors for the school during the Ofsted visit last week. Many of them spoke to the inspectors about their experiences at Stamford Green with confidence and we are very proud of how they conducted themselves.

PE Kit

Your child's PE kit should be in school every day. Please refer to our uniform policy to check which items should be included in the kit.
<https://www.stamford-green.surrey.sch.uk/page/?title=Uniform&pid=25>

Homework

Spelling Shed and MyMaths homework tasks have been set for this week. Extra Homework Time will be held on a Thursday lunchtime for anyone unable to complete the tasks before Tuesday.

Our English learning this week will have a focus on grammar and punctuation. We will revise rules for full stops, commas, question marks and exclamation marks; we will then look at how to use semi colons correctly.

In maths, we continue with our focus on ratio. We start the week looking at scale drawings and learning how to ensure we increase the scale of any drawings we do by using scale factor. We consolidate this by practising how to work systematically around a shape to ensure we keep proportion. Our theme for problem solving this term is, 'spotting patterns', so we will investigate patterns that we spot with triangles.

These are the words for next week's quiz (on 21.1.25):

For review:	immediately, opportunity
Might be new:	determined, sincerely, thorough
Can you do?	existence, incidentally, noticeable

In science, we will be learning about the fossilisation process, where minerals replace organic material over time.

In geography, we will be starting our new enquiry question for this term, 'Why should the rainforest be important to us all?' We will be looking at where rainforests are located in the world, considering this in relation to the equator and the tropics.

Please note, this half term, our PSHE lessons from the Jigsaw scheme are on the topic 'Changing Me', which includes the relationships and sex education (RSE) elements of the Year 6 curriculum. Our lessons with a specific RSE focus will be in the weeks commencing 15.1.24 and 22.2.24. An outline of the areas being covered is as follows:

Week beginning	Lesson theme	PSHE/RSE Learning
13.1.25	Puberty	I can explain how girls' and boys' bodies change during puberty and understand the importance of looking after yourself physically and emotionally
20.1.25	Babies: Conception to Birth	I can describe how a baby develops from conception through the nine months of pregnancy, and how it is born
27.1.25	Adolescent friendships	I know myself well enough to maintain positive relationships with others whilst still keeping my own identity
3.2.25	Real self and ideal self	I am aware of the importance of a positive self esteem and what I can do to develop it

Primary schools are recommended by the Department for Education to teach the 'Babies: Conception to Birth' session but this is not statutory. If you wish to withdraw your child from the lesson in the week beginning 20.1.25, please let your child's class teacher know by Friday 17.1.25 by emailing parents@stamford-green.surrey.sch.uk.

Have a great week,

Mrs Bowe, Ms James, Miss Ozyakup, Miss Swann and Mrs Waldron.