



# Stamford Green

## Primary School and Nursery



13 January 2025

Dear Parents/Carers,

### Nursery Weekly Information – w/b 13.1.25

#### Nursery and Primary School Applications Deadline

A gentle reminder that the closing date for Reception applications, if your child was born between 1 September 2020 and 31 August 2021, is 15 January 2025.

#### Naming items

Please can you check all uniform, water bottles, book bags, coats, gloves, hats and scarves have a name inside.

#### Forest School

Please remember to check your child's Learning Journal to see when their Forest School sessions are.

Please see below for more details.

#### This week we are:

- Singing counting songs to 5 and representing the numbers by holding up the correct number of fingers.
- Using picture cards to help us talk about how we are feeling.
- Singing the nursery rhyme Incy Wincy Spider
- Drawing and mark making with a variety of different tools and focusing on using our dominant hand.
- Using the light box to explore coloured shapes and slices of crystal.
- Continuing to develop our balancing skills.
- Some children will start their Forest School sessions this week.

#### Our skill of the week

This week we are encouraging the Swans to mould and compress wet and dry sand/ playdough. The Cygnets will be developing their small muscle coordination using crayons to draw dots, lines and circles.

#### Reading Focus

This week we are encouraging all the Swans to develop their play around favourite stories. You could encourage this at home by choosing a favourite story and pretending to be the characters and going on an adventure.

The Cygnets are going to be developing their attention skills by sitting and looking at the pictures in books to help them join in with the story.

## Word Aware

### This week's concept words:

#### 2 year olds

This week's concept word is: **fast**

On the way home from school, walk fast and not fast. Find a toy that is fast.

#### 3 and 4 year olds

This week's concept word is: **through**

Go for a walk around your house. Talk about the places you can get through.

## Forest School

Please can you provide **spare socks** and a **named carrier bag** on the days your child has their Forest School sessions. There are lots of muddy puddles to jump in and water has an amazing way of working its way into wellies and waterproofs despite all our best efforts.

## Handy Hints

Place2Be is a fantastic charity which has lots of useful parenting tips and really handy video clips which cover lots of topics which you may find useful. The topics range from establishing family rules, how to manage when your child really knows how to push your buttons, to issues that might arise from older siblings.

It is well worth having a look through their extensive resources.

<https://parentingsmart.place2be.org.uk>

Have a great week,  
Mrs Frost and Mrs Hughes  
YN leaders of learning



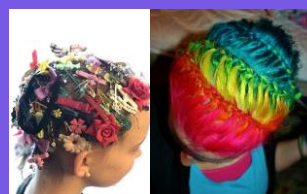
## For your calendar:

**w/b 13.1.25**

Internal Clubs start and will run for 4 weeks.

Please click [here](#) to see the Clubs overview.

**Friday 17.1.25**  
**PTA Crazy Hair Day**  
**Anything goes!**



Suggested £1.00 cash donation.  
The PTA will be collecting the money at the  
East and West Gate on Friday morning.  
Please wear school uniform as usual.

## Coming up soon:

January		
w/b Monday 13.1.25	-	Golden Book Week
Wednesday 15.1.25	8.45am – 9.30am	4C's Class Assembly for Parents/Carers in the Hall
Thursday 16.1.25	8.45am – 9.30am	4V's Class Assembly for Parents/Carers in the Hall
Friday 17.1.25	All day	PTA's Crazy Hair Day
Friday 17.1.25	8.45am – 9.30am	4G's Class Assembly for Parents/Carers in the Hall
Friday 17.1.25	8.55am – 9.55am	PTA Class Reps Coffee Morning with Mrs Druce – Agenda: Spring term fundraising and spending plans
Tuesday 21.1.25	2.40pm or 3.10pm depending on your usual pick time until 3.30pm	YN Class Open Time – Option 1 Please pick one of the two options, not both
Wednesday 22.1.25	8.45am – 9.30am	3L's Class Assembly for Parents/Carers in the Hall
Wednesday 22.1.25	8.00pm	PTA Meeting at The Blenheim – All welcome
Thursday 23.1.25	8.45am – 9.30am	3MD's Class Assembly for Parents/Carers in the Hall
Thursday 23.1.25	12.30pm – 11.30pm	Y5 Young Voices visit to O2 Arena
Thursday 23.1.25	2.40pm or 3.10pm depending on your usual pick up time until 3.30pm	YN Class Open Time – Option 2 Please pick one of the two options, not both
Friday 24.1.25	8.45am – 9.30am	3J's Class Assembly for Parents/Carers in the Hall

## Reminders for you:

### Applications for YN and YR September 2025

Please remember that applications close on Wednesday 15 January 2025.

The Nursery application pack can be found [here](#).

For Reception, please follow the [link](#)

### Friday 17.1.25

PTA Class Reps Coffee Morning from 8.55am – 9.55am

### Wednesday 22.1.25

PTA Meeting at The Blenheim – all welcome.

8.00pm

### Thank You

Thank you for all your support during our graded Ofsted inspection last week, which may have meant you took the time to complete a survey.

The report is being finalised by the lead inspector this week and it then has to be quality assured so we hope to be able to share the outcome with you before half term.