



For your calendar:

Wednesday 11.12.24

School Council's Generations Coffee Morning.

Grandparents, retired neighbours are welcome to join our School Councillors for a cup of tea, some biscuits and a lovely chat.

Friday 20.12.24

School closes early for the Christmas holiday.

East Gate	West Gate
YN: 12.40pm	YN:12.40pm
YR: 12.40pm	YR: 12.45pm
Y1/Y2: 12.45pm	Y1/Y2: 12.50pm
Y3/Y6: 12.50pm	Y3/Y6: 12.55pm
Y4/Y5: 12.55pm	Y4/Y5: 1.00pm
Sunset Collection:	
2.30pm or 3.30pm - 4.00pm	

Coming up soon:

December		
w/b 9.12.24	-	Last week for Internal clubs
Tuesday 10.12.24	9.00am – 9.30am	YN Nativity Tableaux for families in the Hall Children taking part will be those attending Nursery that day
Wednesday 11.12.24	All day	Y1 Bright lights, big cities day
Wednesday 11.12.24	10.30am – 11.45am	School Council's Generations coffee morning – Grandparents, retired neighbours are welcome to join our School Councillors
Wednesday 11.12.24 – Tuesday 17.12.24	-	Children's Christmas cards to each other can be posted in the Christmas post box at the East and West Gates
Wednesday 11.12.24	8.45am – 9.30am	Y4 Carols by Candlelight for Parents/Carers in the Hall – Two seats per child
Thursday 12.12.24	-	Save the Children charity event – Wear a Christmas jumper and non uniform day - £1 donation
Thursday 12.12.24	9.00am – 9.30am	YN Nativity Tableaux for families in the Hall Children taking part will be those attending Nursery that day
Friday 13.12.24	8.45am - 9.45am	Y2 Christmas Show for Parents/Carers in the Hall – Two seats per child
Friday 13.12.24	Afternoon	YR to Y6 Class Christmas parties for children only
Monday 16.12.24	8.45am – 9.45am	Y3 Nativity for Parents/Carers in the Hall – Two seats per child
Tuesday 17.12.24	8.45am – 9.30am	RB's First Christmas Songs for families in the Hall
Wednesday 18.12.24	8.45am – 9.30am	RH's First Christmas Songs for families in the Hall
Wednesday 18.12.24	1.45pm	Y5 and Y6 Carol Service at Christ Church – Doors open for families at 1.40pm
Thursday 19.12.24	8.45am – 9.30am	RP's First Christmas Songs for families in the Hall
Thursday 19.12.24	-	Children's Christmas cards they have posted in the school Christmas post box are given out

Friday 20.12.24	<table border="1"> <thead> <tr> <th>East Gate</th> <th>West Gate</th> </tr> </thead> <tbody> <tr> <td>YN: 12.40pm</td> <td>YN:12.40pm</td> </tr> <tr> <td>YR: 12.40pm</td> <td>YR: 12.45pm</td> </tr> <tr> <td>Y1/Y2: 12.45pm</td> <td>Y1/Y2: 12.50pm</td> </tr> <tr> <td>Y3/Y6: 12.50pm</td> <td>Y3/Y6: 12.55pm</td> </tr> <tr> <td>Y4/Y5: 12.55pm</td> <td>Y4/Y5: 1.00pm</td> </tr> </tbody> </table>	East Gate	West Gate	YN: 12.40pm	YN:12.40pm	YR: 12.40pm	YR: 12.45pm	Y1/Y2: 12.45pm	Y1/Y2: 12.50pm	Y3/Y6: 12.50pm	Y3/Y6: 12.55pm	Y4/Y5: 12.55pm	Y4/Y5: 1.00pm	<p>School closes early for the Christmas holiday</p> <p>Please note the end of term times, which apply when term ends for the Christmas, Easter and summer holidays only</p>
	East Gate	West Gate												
YN: 12.40pm	YN:12.40pm													
YR: 12.40pm	YR: 12.45pm													
Y1/Y2: 12.45pm	Y1/Y2: 12.50pm													
Y3/Y6: 12.50pm	Y3/Y6: 12.55pm													
Y4/Y5: 12.55pm	Y4/Y5: 1.00pm													
<p>Sunset Collection: 2.30pm or 3.30pm - 4.00pm</p>														

Reminders for you:

Christmas Performances at School (Y1 – Y4)

There will only be two seats per child, due to the limited space in the hall. If you are bringing a younger child with you, they will need to sit on your lap. Please be aware that if you are attending a performance, you will not be able to leave during the show.

Wednesday 11.12.24 – Tuesday 17.12.24

Children can post Christmas cards to each other in the Christmas post boxes at the East and West Gates.



Thursday 12.12.24

Save the Children charity event. Wear a Christmas jumper and non uniform day - suggested £1 donation for the Save the Children charity.



Christmas Performance – West Gate

If parents/carers wish to leave via the West Gate after a performance, please wait at the East Gate and once everyone is out of the hall and ready, you will be taken up to the West Gate together. You will not be able to walk up unaccompanied and buzz yourself out.

Community News- Bake Sale

Our fantastic Year 6 Community Prefects will be running a bake sale for Pets As Therapy on Monday 16 December. At Stamford Green we are lucky enough to benefit from support from Max and Bella (and Coco in training) and this Christmas we would like to spread this joy to others. Pets As Therapy four-legged friends visit hospitals, care homes, schools and hospices where they help to mend hearts, lift spirits and bring hope to people facing some of life's toughest challenges. So, join us on Monday 16 December and enjoy some yummy baked goods and help a good cause at the same time!

Cash donations only so please bring change. For more information about Pets As Therapy please go to <https://petsastherapy.org/>

Can you help?

Iftar Planning Committee

Next spring, we would like to host a school Iftar during Ramadan. Everyone will be welcome. The event will be a wonderful opportunity for the whole school community to come together at this special time. We are looking for volunteers to be part of our planning committee, to advise and support the event. If you feel you would like to be part of this team, please contact Mrs Temlett via email parents@stamford-green.surrey.sch.uk



Year 1 Weekly Information w/b 9.12.24

Christmas Party

Please make sure you have checked your child's Learning Journal to see what party food you need to bring in on 13.12.24.

Please do not bring it in before this date as we have nowhere to store it.

Thank You

We would like to say thank you very much for all the amazing costumes that came in for the Christmas Nativity.

We hope you enjoyed watching.

Year 1 spelling words

Can you write these words in a sentence?



In preparation for our new learning next half term in geography, on Wednesday (11.12.24) we will be having our 'Bright Lights, Big Cities Day'. Each classroom will take on a different country for the children to visit throughout the day.



Crafting with Mrs Blackler



Baking with Mrs Herman



Irish Dancing with Mrs Smith



Pantomime as a year group.

In maths this week, we will spend time looking at 20 in different ways, particularly ways where each ten can be fixed or broken apart. Children could then move on to seeing 20 as two base 10 pieces that cannot be broken apart, although the individual ones are still obvious.

This week in Fluency Bee

w/b 9.12.24	<p>Composition of 6 and 7 as a part whole model</p> <p>How many more to make 6?</p> <p>How many more to make 7?</p> <p>Bonds to 6</p> <div style="display: flex; justify-content: space-around; align-items: flex-start;"> <div style="text-align: center;"> <p>6 is made of 3 and 3 3 and 3 make 6</p> </div> <div style="text-align: center;"> <p>How many more to make 6?</p> <p>Have a think</p> <p>4 + 2 = 6 6 = 4 + 2</p> </div> <div style="text-align: center;"> <p>How many more to make 7?</p> <p>Have a think</p> <p>7 = 5 + 2</p> </div> <div style="text-align: center;"> <p>3 and 3 make 6 2 and 4 make 6 1 and 5 make 6 0 and 6 make 6</p> </div> </div>
------------------------------	---

In PSHE, we will be finishing our puzzle piece of Celebrating Differences. This will be all about how being unique and different from our friends makes who we are and we will be celebrating ourselves in this lesson.

In science, we will be thinking about what is the best material for an umbrella. The children will be testing different materials to see which are waterproof.

In art, we will be assembling our Paul Klee collage that has been inspired by his piece 'Castle and Sun'.

Have a lovely week.

Mrs Blackler, Mrs Herman, Mrs Hill and Mrs Smith



Year 2 Weekly Information w/b 9.12.24

2J

Reminder of our non uniform day on Wednesday 11 December as a Golden Run reward.

Y2 Performance

Please ensure that all children have their costumes in school asap – Thank you so much for your support – the costumes we have seen already are amazing!

Party food

Please see your child's Learning Journal for party food donations. Please can they be brought in on Friday 13 December – thank you.

In English this week, we will be editing our character descriptions. This will include proof reading and amending any errors such as capital letters and full stops. We will also be checking for correct use of comma and any ways that we can improve our writing by changing any of the vocabulary we have used.

In reading, we will be starting a new book called 'Dasher' by Matt Taveres. We will be completing team reading in order for use to practice our fluency and expression.

The Spelling Shed assignment will be set on Tuesday and 5 Spelling Bee assignments are to be completed by the following Tuesday.

In Spelling Shed this week the children will be learning challenge words this week e.g. wild, climb, most, only, both, old, cold, hold, gold, told

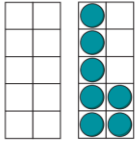
This week's spelling quiz words are below. The spelling quiz will be completed on Tuesday 17.12.24 in the Learning Journal.

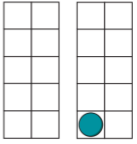
For review:	said, once
Might be new:	past, both child
Can you do?	really, difficult, minute

This week in Fluency Bee – below you will find some examples of how we will be exploring the different structures of addition and subtraction and how they are related.

w/b 9.12.24	- Add 10 -Add 10 calculations 10 more than <input type="text"/> is 16
------------------------	---

Complete the stem sentences.
Draw more counters to match.

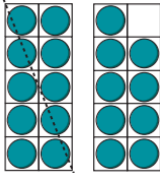
1  10 more than 7 is

3  10 more than 1 is

= 2 + 10

w/b
16.12.24

-Subtract 10

 10 less than 19 is

In maths this week, we will be continuing with shape. We will know that a shape is symmetrical when both sides are the same and that shapes with a mirror line drawn, can identify whether a shape has a vertical line of symmetry. We will also know that when we use symmetry to complete a picture we should plot the vertices first before joining up the shape; that a ruler needs to be used to draw accurately and that the squares away from the mirror line need to be counted carefully.

In RE this week we are learning about the symbolism of the gifts given at the very first Christmas. This will enhance our understanding of why Christians believe giving is important.

Mrs Bright, Mrs Jayasuriya, Miss Ozyakup and Mrs Williams



Year 3 Weekly Information w/b 9.12.24

Homework

This week, the children will be set a My Maths task to complete. It will be available from Thursday to Tuesday.

Year 3 Nativity

We're looking forward to performing our nativity show next Monday (16.12.24). Details as per the Autumn Dates for Diaries:
- 2 seats per child
- 8.45am – 9.45am

Battle of the Bands

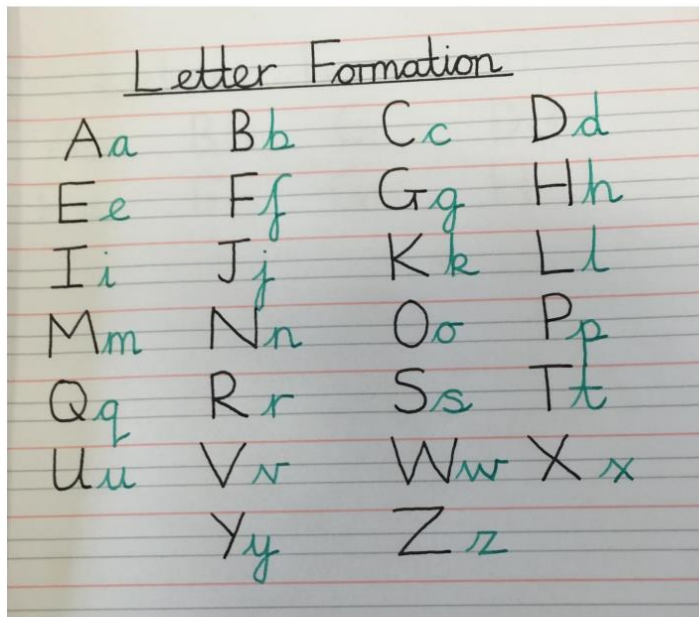
This week, Year 3 will be taking part in the Battle of the Bands competition on TTRS. The competition runs from 7.00am Tuesday 10 December to 7.00pm Thursday 12 December. Children can play for 30 minutes every day in any game mode with every correct answer to a multiplication or division question, earning themselves and their class points. Which class will be victorious?

MATHS BANDS BATTLE

starts in 4 days
Get practising!

In English this week, we'll be using our editing skills to edit and improve our biographies from last week. We will use the CUPS method to help us – Capital letters, Understanding, Punctuation/Paragraphs and Spellings. We'll also have some handwriting sessions.

We have noticed that lots of children are finding it tricky to join their letters correctly, using the correct letter formation. The image below is from our Presentation and Display Policy. We would really appreciate your support with this at home.



Here are this week's spelling quiz words (for the quiz on 17.12.24). We would appreciate it if you could please help your child to practise them at home.

For review:	again, many
Might be new:	quarter, island, group
Can you do?	consider, grammar, straight

In maths this week, our learning is focussing on the 3 times table. We'll be building on our work on sharing and grouping and multiplying by 3 by relating this learning to dividing by 3. In order to help the children consolidate their learning into their long term memory, every morning we'll continue to revisit past maths learning during our Morning Task time – here's an example of what your child is working on when they arrive at 8.35am:

Flashback 4

White Rose MATHS

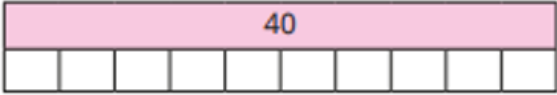
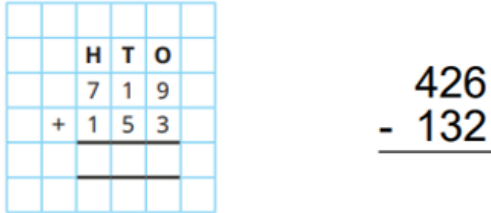
Year 3 | Week 10 | Day 1

Copy the digits: 0 1 2 3 4 5 6 7 8 9

- 1) Complete the bar model. 8×10

30
- 2) Draw two different arrays to represent 10
- 3) Calculate $904 - 268$
- 4) What is the difference between the number of red cars and yellow cars?

Colour of car	Tally
Red	
Yellow	

Last Lesson	Last Week
<p>Use the bar model to work out the division $40 \div 10$</p> 	<p>Is the statement always true, sometimes true or never true?</p> <div style="border: 1px solid black; padding: 5px; margin: 10px auto; width: fit-content;"> <p>A multiple of 5 is a multiple of 10</p> </div> <p>Explain your answer.</p>
Last Month	Last Year
	<p>Mo draws a shape with 5 straight lines. What is the mathematical name for his shape?</p>

Coming up soon in our Fluency Bee sessions:

w/b 9.12.24	Groups of 3 Count in 3s Represent 3s
w/b 16.12.24	Arrays The 3 times table Use known facts Divide by 3 (group)

In the wider curriculum, in science we will be answering our enquiry question, 'What is inside us?' We will be reviewing our learning so far this term and creating an information page to demonstrate our learning.

In computing, we will be describing cells on spreadsheets using their addresses.

In geography, we will be answering our enquiry question, 'What is below the ground?' We will be creating a quiz for each other using a range of question types.

In art, we will be working on our final character design in the style of Quentin Blake. We'll enjoy a gallery walk and will evaluate, and reflect on, our work. This will mark the end of our enquiry question topic: 'How do artists use proportion?'

Have a wonderful week,

Mrs Davis, Miss Jenkins, Mr Loughlin and Mrs McClelland



Year 4 Weekly Information w/b 9.12.24

Christmas performance

The children have worked so hard during rehearsals for our Christmas performance.

We can't wait to show 2 people per child, what we have been doing on Wednesday morning!

Music

Please use this link: <https://www.youtube.com/watch?v=ehkHX43XfAY> to support the children with their recorder song ready for their performance on Wednesday.

Christmas party food

The children all have a sticker in the Learning Journal with the party food they have volunteered to bring in. please can we have this for our class parties on Friday 13 December.
Thank you for your support.

In English, the children will be editing and proofreading the speeches that they recently wrote, and then delivering them to their classmates! They will also focus on handwriting and presentation. In reading, the children will complete a series of activities to help them to make predictions about events in stories.

This week's spelling quiz words (taken from the Y4 Autumn term list) will be:

For review:	guide, important, position
Might be new:	interest, naughty, question
Can you do:	neighbour, system

In maths this week, the children will be finishing the first unit of work on multiplication and division. We will be refreshing our knowledge of what a product is and then using this to find the product of three numbers. Later on in the week, the children will be completing a maths quiz to show what they have learnt.

Please can you support your child with completing Times Table Rock Stars each night. It is also important the children complete a soundcheck at least once a week so we can track areas the children need support in.

Coming up in speedy maths (*indicates new learning):

w/b 9.12.24	Add and subtract pairs of 2-digit numbers at speed. Know pairs of numbers to 100. Know 2x, 3x, 4x, 5x, 6x, 10x tables and related division facts at speed.
w/b 16.12.24	Add and subtract pairs of 2-digit numbers at speed. Know pairs of numbers to 100. Know 2x, 3x, 4x, 5x, 6x, 10x tables and related division facts at speed.

In science this week, children will be revising all the knowledge and vocabulary they have looked at recently. They will devise a multiple choice quiz to test each other on key knowledge.

In PSHE, the children will be having conversations around why it is good to accept people for who they are and why that makes them special.

In DT, the children will finish the careful process of adding the electrical circuit to the back of their Christmas cards. They have worked so hard on their designs.

In RE, the children will share everything they have learnt this term on Islam and present it in a format of their choice.

In history, children will consider what 'legacy' means when they reflect on what we have been left by the Ancient Greeks.

Have a great week.

Miss Croucher, Mr Vidal and Mr Gordon



Year 5 Weekly Information w/b 9.12.24

Christmas Carol Concert

We're excited to perform our Christmas carols at Christ Church on **Wednesday, 18.12.24** at 1.40pm.

We look forward to seeing you there!

Christmas Jumpers and Non Uniform Day

Remember your festive jumpers this **Thursday**.

Please bring in a £1.00 donation for Save the Children.

Christmas Parties

This **Friday, 13.12.24**, we will be having Christmas parties in class in the afternoon.

All children have been asked to bring specific items of food in to share. Further details are in your child's Learning Journal. Please can these items be brought into school on Friday as we have limited storage in school.

Many thanks in advance.

In English this week, we will be performing and editing our free verse poems, based on space. We will also be learning more about how figurative language can be used to create atmosphere and entertain an audience. We will be concluding our work based on Shaun Tan's 'The Arrival' by responding to the text and relating it to other books we have read. This week in class and on Spelling Shed we will be looking at challenge words.

The children will be having a spelling quiz next Tuesday (17.12.24) on these words:

For review:	increase, decide, possess
Might be new:	twelfth, immediate, secretary
Can you do?	symbol, disastrous

In maths, we will continue to look at fractions and how we can subtract two whole numbers. We will also start practising multiplying using the grid and column method. We will be multiplying two 2-digit numbers and multiply a 4-digit number with a 2-digit number.

Our speedy maths will be an opportunity to recap on the skills we have practised this term.

In art, we will be concluding our enquiry question about how artists evoke emotion and reflecting on how our clay sculpture installations make us feel.

In PSHE, we will be asking 'How is my culture different to others?' We will be thinking about different cultures and how they differ from our own.

In geography, we will be comparing the weather in different regions and looking at how these contrast, depending on where in the world they are.

Have a wonderful week,

Mrs Beadle, Miss Penn and Mrs Temlett



Year 6 Weekly Information w/b 9.12.24

Snacks for Break

If you are giving your child a snack for break, it should be an item of fruit only. No chocolate should be given to your child for break or lunchtime and, to ensure we respect any allergies or food intolerances, no food should be shared with other children.

Music Festival Auditions

If your child would like to be considered for the 2025 Music Festival, there will be auditions after school (3.15pm -4.30pm) this Friday (13.12.24). They should prepare a chorus and verse of any song. If they are selected, they will need to attend rehearsals in the spring term, which will alternate between Mondays and Tuesdays.

Christmas Party

Please check your child's Learning Journal for what they should bring in for our Christmas party on Friday 13 December. We are all looking forward to some festive fun!

At the beginning of this week in English, we will be editing and improving the biographies we wrote independently last week. We will pay particular attention to coherence and tone. Later this week, we will start to use Charles Dickens' 'A Christmas Carol' as a stimulus. We will be looking at how Dickens creates atmosphere and develops character in this classic festive tale.

In maths, we will focus on metric measures and converting between them, for example, grams and kilograms, millilitres and litres. We will also think about real life examples of where and why we might need to convert between miles and kilometres. In problem solving, we will work systematically through a maze to make a target number.

These are the words for our spelling quiz on 17.12.24:

For review:	according, communicate, desperate
Might be new:	amateur, controversy, embarrass
Can you do?	accommodate, exceed

Coming up soon in speedy maths:

w/b: 9.12.24	Add and subtract pairs of 2-digit numbers at speed. Know all tables to 12x12 including division facts at speed. Know pairs of numbers to 180. Know square numbers to 12 ² Add three tens at speed.
w/b: 16.12.24	Give change from £1 at speed Know all tables to 12x12 including division facts at speed. Know common equivalent fractions, decimals and percentages. Add and subtract 2-digit and 3-digit numbers at speed. Continue simple number patterns Know square roots to $\sqrt{144}$ (ie for tables) Use tables to work out related x and \div at speed.

In science, we will use our own research to create an accurate classification key for an animal, including kingdom, phylum, class and key animal characteristics.

In history, we will be reflecting on all our learning from this term and answer the enquiry question, 'How have our ancestors made a difference to our rights?'

For our Christmas Concert at Christ Church on Wednesday 18 December, please ensure your child is wearing correct uniform, including a school jumper or cardigan. Whatever the weather, we will walk to the church on Tuesday for rehearsal and on Wednesday for the performance, so, please make sure your child has a waterproof coat with a hood with them.

Calling all bakers!

The Year 6 Community Prefects will be running a bake sale for parents and children after school on Monday 16 December in order to help raise some money for Pets As Therapy.

We would love Year 6 to get involved by baking or buying some delicious cakes or cookies to make this event a success. Please bring in any cakes or cookies to school on Monday 16 December. **No nuts please**, as we are a nut free school. In addition, we would love to cater for as many dietary needs as possible so if you are baking/buying something that is gluten free/dairy free please make sure this is clearly labelled. Many thanks in advance.

Have a great week,

Mrs Bowe, Ms James, Miss Ozyakup, Miss Swann and Mrs Waldron