



## For your calendar:

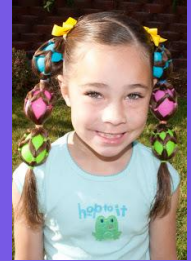
### YR – Y6 – Class Open Time 8.35am – 9.00am

Please come along on either Wednesday 10 January or Friday 12 January, to see your child's classroom and books.

There will be a sticker for you to complete, that will be stuck in your child's book as they love reading what you like and are proud of.

### Friday 19.1.24

PTA Crazy Hair Day  
Anything goes!



Suggested £1.00 cash donation.  
The PTA will be collecting the money at the East and West Gate on Friday morning.  
Please wear school uniform as usual.

## Coming up soon:

January		
Tuesday 2.1.24	8.35am	YN to Y6 – Nursery and school opens for the spring term
Monday 8.1.24	9.00am – 10.30am	Come and Play Toddler Group – South Gate entrance via Christ Church Mount only
Monday 8.1.24	8.00pm	PTA Meeting at The Blenheim – All welcome
Tuesday 9.1.24	All day	6B Visit Tate Britain and Houses of Parliament
Tuesday 9.1.24	9.15am – 10.15am	Prospective families Open Morning – School and Nursery - please book via our website
Tuesday 9.1.24	2.40pm or 3.10pm depending on your usual pick time until 3.30pm	YN Class Open Time – Option 1 Please pick one of the two options, not both
Wednesday 10.1.24	8.35am – 9.00am	YR – Y6 Class Open Time - Option 1 Please pick one of the two options, not both
Thursday 11.1.24	8.55am – 9.55am	PTA Class Reps Coffee Morning with Mrs Druce – Agenda: Spring term fundraising and spending plans
Thursday 11.1.24	6.30pm – 8.00pm	Y5 Star Gazing Event at school
Friday 12.1.24	8.35am – 9.00am	YR – Y6 Class Open Time Option 2 Please pick one of the two options, not both
Friday 12.1.24	2.40pm or 3.10pm depending on your usual pick up time until 3.30pm	YN Class Open Time – Option 2 Please pick one of the two options, not both
w/b Monday 15.1.24	-	Internal clubs start
Wednesday 17.1.24	8.45am – 9.30am	4MG's Class Assembly for Parents/Carers in the Hall
Wednesday 17.1.24	12.00pm – 11.30pm	Y5 Young Voices visit to O2 Arena
Thursday 18.1.24	8.45am – 9.30am	4V's Class Assembly for Parents/Carers in the Hall
Friday 19.1.24	All day	PTA's Crazy Hair Day
Friday 19.1.24	8.45am – 9.30am	4C's Class Assembly for Parents/Carers in the Hall

## Reminders for you:

### PTA Meeting Monday 8.1.24

We will be holding our first PTA Meeting of the spring term tonight at 8.00pm at The Blenheim.

Everyone is welcome.

### PTA Class Reps Coffee Morning

Thursday 11.1.23  
8.55am – 9.55am

### w/b Monday 15.1.24

Internal Clubs Start.

You will receive an email by Friday 12.1.24 if your child has gained a place at a club this half term.

The Nursery Application Form for September 2024 is still available on the school website under Nursery [Admissions](#). The closing date for Nursery applications is 15 January 2024.

We would like to say thank you very much for all your kind gifts and cards that were received by all the members of staff before the Christmas break. They were very much appreciated.



## Year 1 Weekly Information w/b 8.1.24

### Reminder

Please ensure your child brings a named waterproof coat to school every day and a named water bottle.

### Thank You

The Year 1 team would like to express their thanks to the parents for all your thoughtful Christmas gifts.

### Year 1 spelling words

Can you write these words in a sentence?

said  
was  
the

In maths this week, we will be focusing on place value numbers to 20. We will be looking at the value of digits as well as recognising numerals.

In PSHE, we will be thinking about steps to success when setting ourselves goals. As a class we will be making a jam sandwich and deciding which steps to take to be successful.

In science we will be identifying trees and exploring the difference between deciduous and evergreen trees. We will be observing what happens to deciduous trees in winter.

In computing, we will be continuing to log in to Purple Mash independently and accessing our 'to do' tasks.

In RE, we will be starting to learn about Judaism and looking at the celebration of Shabbat.

In art, we will be exploring how artists use and create colour, our chosen artist this term is Paul Klee. To start, we will explore the colour wheel with a focus on primary colours.

In history, we will be looking into what life was like 50 years ago compared with today, we start thinking about the meaning of 'past' and 'present' and what significant events have happened in the past.

A message from Miss Hunnable - Hello! I have thoroughly enjoyed my first week with 1B and look forward to all the amazing learning we will do together. A few things about me, firstly I have a sweet tooth, I do enjoy the odd chocolate now and again, luckily, I have a whole tub of Lindt

from Christmas to get through. On the healthier side, I do enjoy regular walks, swimming and Pilates. To keep my mind healthy also, I am currently reading the Light Between the Oceans by M.L. Stedman. I am looking forward to meeting you at Class Open Time.

Have a lovely week.

Mrs Herman, Mrs Smith and Miss Hunnable



## Year 2 Weekly Information w/b 8.1.24

### Thank you

We would like to say thank you very much for all your kind gifts, cards and messages that we received before the Christmas break. They were very much appreciated. Happy New Year to you all.  
From  
the Year 2 Class Teachers.

### Library Days

2P – Tuesday  
2J - Tuesday  
2W – Wednesday

If your child has finished their book, they can change it on these days.

### Maths

In maths we are looking at making amounts using coins and notes. Over the week you might find a moment for your child to practise using any coins or notes you have at home.

In English this week, we will begin to learn about different sentence types including a question, a statement, a command and an exclamation. We will be learning the features of each and using the correct punctuation. We will be reading 'The Day the Crayons Quit' by Oliver Jeffers and 'Dragon Post' by Emma Yarlett. This half term we will be focusing on letter writing.

In reading, we will be reading 'The Dark' by Lemony Snicket. We will be predicting what we think is hiding in the bottom drawer and explaining our understanding of the text.

In Spelling Shed this week the children will be learning to spell words where 'ed' is added to words ending in 'y' e.g. copied, replied, spied, fried, applied etc.

The spelling quiz will take place on Friday and will be completed in the children's Learning Journals.

<b>For review:</b>	come, here, love
<b>Might be new:</b>	busy, eye, kind
<b>Can you do?</b>	answer, business

'\*' indicates new learning

<b>w/b 8.1.24</b>	* Know 5x table at speed Know 2 x table at speed Know pairs of 10s to 100 Know 10 x table at speed Know number facts to 20 at speed Know doubles of units at speed
<b>w/b 15.1.24</b>	Know 5 x table at speed Count on in 2s at speed Count on in 5s at speed Know 10 more or 10 less than 2-digit numbers Know facts relating to number bonds to 20.

In maths, we will be counting money (pounds and pence), choosing which coins and notes to make a given amount, finding different ways of making the same amount and lastly comparing amounts of money using the language of “greater than”, “less than”, “most” and “least”, together with the inequality symbols.

In science, we will be starting our new enquiry question – Does a big plant need a big seed? We will be thinking about what our local environment looks like in the winter, especially recognising deciduous and evergreen trees.

In DT we will be starting to look at our new enquiry question - Where does food come from? We will be discovering which foods come from plants and animals and selecting our favourite foods from each group.

Have a great week,

Mrs Jayasuriya, Mrs Price and Mrs Williams



### Year 3 Weekly Information w/b 8.1.24

#### Thank you!

The Year 3 team would like to thank you for your generous gifts and messages at the end of last term. They were all very much appreciated.

#### SEND PCTCs

A reminder that the Y3 SEND PCTCs will take place on Wednesday 17 January. (If this applies to your child, you will have been sent an email and given the opportunity to book an appointment.)

#### Homework

A My Maths task will be set on Tuesday and is due in on Tuesday next week (16.1.24)

It was lovely to welcome the children back last week and hear all about what they had been up to over the holiday.

Our focus in English is persuasion. We will be thinking about when and how we might need to persuade others. We will look at persuasive letters and identify their features. We will then use the acronym PERSUADE for persuasive devices – **P**ersonal, **E**motion, **R**hetorical questions, **S**ay it again (repetition), **U**ndermine, **A**ncedote, **D**irect, **E**xaggeration. Why don't you see how many of these your child can remember?

These are the spelling words for this week. We would appreciate it if you could please help your child to practise them at home.

<b>For review:</b>	great, would, behind
<b>Might be new:</b>	though, actual, describe
<b>Can you do?</b>	favourite, particular

In maths this week, we are continuing to focus on multiplying and dividing by looking at links between the multiplication tables and using these to work out related calculations e.g.  $70 \times 8 = ?$  Please continue to support your child to use TTRS as knowing their times table facts fluently will greatly benefit them in our next topic.

Coming up soon in speedy maths (\*indicates new learning):

<b>w/b 8.1.24</b>	* Know division facts relating to 6x table at speed. Add and subtract two tens at speed. Know 10 more and 10 less than 3-digit numbers.
<b>w/b 15.1.24</b>	* Mentally add pairs of 2-digit numbers at speed Know division facts relating to the 6x table at speed Know 2x, 3x, 4x, 5x, 6x, 10x tables at speed.

In science this week, we are continuing to investigate our new biology enquiry question, 'How can you tell if something is a plant?' We will be exploring the requirements of plants for life and growth and will set up an investigation to see what happens if plants do not have the correct requirements.

We will also start to learn about our scientist for this half term, Barbara McClintock who was awarded a Nobel Prize for her work studying chromosomes in plants.

In art, we are beginning to think about our new enquiry question, 'How do artists create abstract sculptures?'. We will learn how to create an even slab using clay.

In RE, we will start our new Christian enquiry question, 'How did Jesus change lives – and how is it good news?'. This week, we will look at how Peter became a disciple of Jesus.

In computing, we will be exploring how computers can be used to communicate.

Our new history enquiry question, 'Who stood here before us?', directs our learning to the Anglo-Saxons. We will explore who the Anglo-Saxons were, why they invaded Britain and what life would have been like during that period.

Enjoy your week,

Ms James, Miss Jenkins, Mrs Spooner and Miss Verlander



## Year 4 Weekly Information w/b 8.1.24

### Changing me

You might recall from our Y4 Welcome meetings in the summer term that we mentioned that we would remind parents when the 'Changing me' unit of learning was coming up in PSHE.

This is the theme of our PSHE learning this half term. Please click [here](#) for further information about what is covered including key vocabulary about the changes that happen to our bodies when we begin puberty.

### Thank you

We would like to thank you for your kind gifts to us for Christmas. We appreciate your generosity as well as the creativity in combining the lovely messages from your families/children. It was lovely to see all the children back after the Christmas holidays.

### Book recommendations:



### The Land of Roar by Jenny MacLachlan

A children's fantasy adventure book about twins Arthur and Rose who as children used to make believe climbing through their grandad's old sofa in the attic into the Land of Roar. When they are eleven and their game a distant memory, they help grandad clear his attic and are horrified to see grandad vanish in the sofa. Is Roar real? A funny and captivating book.

In English this week, we will be practising our speaking and listening skills in preparation for our class assemblies which are the following week. We can't wait to show you what we have been doing!

This week's spelling quiz words (taken from the Y4 Spring term list) will be:

<b>For review:</b>	build, exercise, imagine
<b>Might be new:</b>	calendar, enough, possession
<b>Can you do:</b>	category, environment

In maths this week, we will be continuing our work with multiplication and division. We will be looking at what happens to a number when we multiply it by 100. We will then be comparing this to when we divide a number by 10 and 100. At the end of the week, we will be making links between related number facts.

Coming up in speedy maths (\*indicates new learning):

<b>w/b 8.1.24</b>	*Know all tables mixed at speed. Continue simple number patterns Know pairs of numbers to 90. Add and subtract pairs of 2-digit numbers at speed.
<b>w/b 15.1.24</b>	*Know simple equivalent fractions Know all tables mixed at speed. Know pairs of numbers to 100. Continue simple number patterns

Have a lovely week,

Mrs Glaister, Mrs McClelland, Mr Vidal, Miss Croucher and Mr Gordon



### Year 5 Weekly Information w/b 8.1.24

#### Internal Clubs

This half term's Internal Clubs start from Monday 15 January 2024.

#### Star Gazing

We're very excited to be star gazing on Thursday this week.

Children should wrap up warm and wear suitable shoes for the field. Please bring in a mug from home (for your hot chocolate!). We are looking forward to seeing the children at 6.30pm at the East Gate office doors, where we will register them. Parents and carers to pick up at 8.00pm prompt please.

#### O2 Young Voices

Everyone is incredibly excited about Young Voices on 17.1.24.

Please can you check you have completed the [Google Form](#) (number of tickets and email address for audience tickets, plus emergency contact number for the night).

Any ordered T-shirts will be given to the children on the day of the concert. Please ensure your child comes to school with school uniform on. See the letter for details.

In English this week, we will look in detail at the features of our report writing toolkit, focusing on the formal and factual style of the writing. We will be reading our class reading book, an abridged version of Shakespeare's Romeo and Juliet. This week in class and on Spelling Shed (this week's homework) we will look at the spelling pattern -able where the 'e' from the root word remains.

The children will be having a spelling quiz on Friday on these words:

<b>For review:</b>	centre, enough, heard
<b>Might be new:</b>	attached, competition, develop
<b>Can you do?</b>	achieve, curiosity

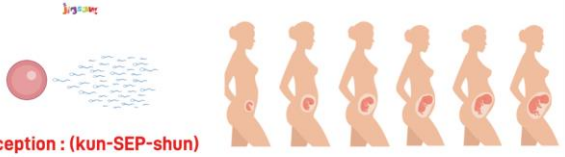
In maths, we will be revising our learning of multiplication. We have recently been learning how to multiply 2 digits by 2 digits and will be increasing this up to 4 digits by 2 digits. We will finish the week with problem solving using multiplication.

Our speedy maths will be:

<b>w/b 8.1.24</b>	Subtract 2-digit from 3-digit numbers Add and subtract pairs of 2-digit numbers at speed. Know all tables to 12x12 including division facts at speed. Know pairs of numbers to 180. Convert cm to m and vice versa
<b>w/b 15.1.24</b>	Know all tables to 12x12 including division facts at speed. Subtract 2-digit from 3-digit numbers Convert L to ml and vice versa Use tables to work out related x and ÷ at speed.

In science this term our enquiry question is 'How do humans change over time?'. This week we will be learning about the life cycle of different living things, recapping on the stages of human life. This will link with our PSHE, where we will be starting the topic of 'Changing Me'. This week we will be learning about how a girl's body changes during puberty.

In two weeks' time we will be learning about conception. This will be done in an age-appropriate and sensitive way as mentioned at the Welcome meeting in July. You have the option to withdraw your child from the PSHE lesson where we discuss consent and alternative methods of conception such as IVF. As a reminder, here is a sample image of the resources we will be looking at in class:



**Conception : (kun-SEP-shun)**

**Resources and key vocabulary used in this lesson**

- conception
- sexual intercourse
- fallopian tube
- embryos
- IVF
- contraception
- Fertilisation
- cervix
- pregnancy

the sperm would travel up through the cervix

We would like to say a big thank you for your generous gifts and well wishes at the end of last term – your thoughtfulness is very much appreciated.

Have a wonderful week,

Mrs Beadle, Miss Ozyakup and Mrs Temlett



## Year 6 Weekly Information w/b 8.1.24

### PSHE/RSE

Please see the end of the Year 6 information for details about the Relationships and Sex Education lessons that will be taught in the coming weeks.

### Tate Britain/Houses of Parliament

6B's trip is tomorrow, 9.1.24.  
A reminder that the children will all need to be collected from the East Gate following the trip. We will update via Twitter/X if we are running late.

### No Walking Home Alone from Clubs

Due to it getting increasingly dark in Autumn 2 and there being no daylight in Spring 1, children will need to be collected after a club in these terms.

A big thank you from all the Year 6 team for your kind cards and gifts at the end of last term. We hope you had an enjoyable and relaxing end to the year and wish everyone all the best for 2024.

In English this week, we will continue to read our new term's text of *The Explorer*, a book which follows four children as they are stranded in the Amazon jungle with no adults. This will link nicely to our wider curriculum lessons, where we will be investigating the world's rainforest with a particular focus on South America. We will be studying the language used within *The Explorer* and looking more widely at a range of adventure stories as we begin our preparations for writing our own adventure stories this half term.

This week's spelling quiz words for Friday's quiz:

<b>For review:</b>	average, correspond, equipment
<b>Might be new:</b>	determined, nuisance, rhythm
<b>Can you do?</b>	chauffeur, definitely

In maths, we'll close our work on fractions. We will be solving mixed questions that contain fractions; finding fractions of an amount; and using fractions to find the value of a whole. Our theme for this half term's problem solving is finding patterns. This week, we will be thinking about repeating patterns relating to triangles.

Coming up soon in speedy maths:

<b>w/b 8.1.24</b>	Add and subtract pairs of 2-digit numbers at speed. Add and subtract p from £&p. Use tables to work out related x and ÷ at speed. Convert cm to mm and vice versa. Convert m to km and vice versa. Add three tens at speed. Add and subtract 2-digit and 3-digit numbers at speed.
<b>w/b 15.1.24</b>	Know all tables to 12x12 including division facts at speed. Know pairs of numbers to 180. Know common equivalent fractions, decimals and percentages. Know square numbers and square roots to 12 <sup>2</sup>

In the wider curriculum, we will be investigating the Amazon rainforest in our geography lessons. We will be looking at the locations of rainforests in relation to the equator and analysing why rainforests appear where they appear. In DT, we will be investigating some of our favourite electronic board games. We will discuss the success of these games and how they have utilised electronics to ensure they are effective. In PE, we will continue to develop our dance skills in our



indoor lessons and, in our outdoor (netball) lessons, consolidate our knowledge of effective passing, whilst adhering to the rules of netball.

Please note, this half term, our PSHE lessons from the Jigsaw scheme are on the topic 'Changing Me', which includes the relationships and sex education (RSE) elements of the Year 6 curriculum. Our lessons with a specific RSE focus will be in the weeks commencing 15.1.24 and 22.2.24. An outline of the areas being covered is as follows:

Week beginning	Lesson theme	PSHE/RSE Learning
1.1.24	My self image	I am aware of my own self-image and how my body image fits into that
15.1.24	Puberty	I can explain how girls' and boys' bodies change during puberty and understand the importance of looking after yourself physically and emotionally
22.1.24	Babies: Conception to Birth	I can describe how a baby develops from conception through the nine months of pregnancy, and how it is born
29.1.24	Adolescent friendships	I know myself well enough to maintain positive relationships with others whilst still keeping my own identity
5.2.24	Real self and ideal self	I am aware of the importance of a positive self-esteem and what I can do to develop it

Primary schools are recommended by the Department for Education to teach the Babies: Conception to Birth session but this is not statutory. If you wish to withdraw your child from the lesson in the week beginning 22.2.24, please let your child's class teacher know by Friday 19.1.24 by emailing us [parents@stamford-green.surrey.sch.uk](mailto:parents@stamford-green.surrey.sch.uk)

Have a great week,

Mrs Bowe, Mr Deane-Armstrong and Mr Loughlin