



8 January 2024

Dear Parents/Carers,

## Reception Weekly Information – w/b 8.1.24

For children with SEND (Special Educational Need or Disability), remember:

**Reception SEND PCTCs**  
are on  
Monday 15 January 2024

**Show and Tell** is on **Thursday** and this week is **Red** group's turn. See information below.

### Class Open Time

Remember to come to one of the open time sessions only, not both. Details are in the Dates for Diaries.

We would like to say a huge thank you on behalf of the whole team for the generous messages, cards and Christmas gifts we received at the end of last term. It was very kind of you – we love teaching your little ones and we were all very touched by the kind messages and gifts. It has been fantastic to hear all of the children's Christmas holiday news as we welcome them back from their break. We hope you had a lovely time with your families and friends over the festive period.

The children have new carpet spots and new groups. Ask your child which group they are in. The groups are: Red, Orange, Yellow, Green, Turquoise, Indigo.

As the weather is a little chillier at the moment please remember that leggings aren't part of our school uniform. Children can wear skirts or pinafore dresses with grey school socks or tights, or they can wear grey school trousers.

Grey trousers or shorts (no denim, cord or leggings): <ul style="list-style-type: none"><li>Worn with plain grey socks, ankle length or below the knee (no trainer socks or tights with shorts)</li></ul>	Generic
Grey skirt or pinafore (no denim or cord): <ul style="list-style-type: none"><li>Length on or below the knee</li><li>Worn with grey tights or plain grey socks, ankle length or below the knee (no trainer socks)</li></ul>	Generic

### Internal Clubs (Teacher Run)

It is wonderful that lots of Reception children have requested a place at Storytime Club this term. Unfortunately, there aren't enough places for everyone, so places were allocated using a lucky dip. If you haven't received a confirmation email from Mrs Vidal, your child hasn't got a place this half term. Priority for places for this club in the second half of term (Spring 2) will be given to those who missed out this time. You will still need to apply when the letter comes out before half term.

## Learning Question of the week: What is diversity?

'All About Me' is our focus for learning this term and we are starting to think about what diversity means and why it is important for us to be respectful and show kindness towards others. We will share some stories which will include introducing the children to different cultures and nationalities. We will look at and talk about clothing, skin colour, hair and other differences that make us special and unique. We will also start to look at maps and the information they can provide. Do you have any maps at home you could look at together?

### Phonics

The children have all settled into their new Read Write Inc. Phonics groups. We have been very impressed with how much they have remembered and how they are being independent with applying their knowledge. Look out for the letter in your child's book pack which gives specific ideas for how to support them at their stage of phonics.

### Concept Word

This week's concept word is: Different



**Help your child at home:** sort through a pile of clothing and talk about how the items are different

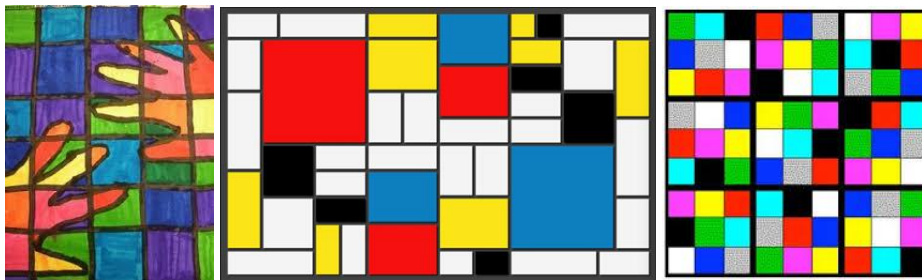
### Reading

Some words we learn to read are called 'red' words. These are words that are not decodable using our usual 'Fred Talk' method. We need to learn these by sight. We will be introducing new 'red' words each week and will put a sticker in your child's journal to let you know what they are. Please practise recognising these words at home.

This week's red words are **I** and **my**

### Maths

In maths we continue to think about 'more than' and 'less than' as well as having a go at counting in 2s and 10s. This week's shape is the 2D square. What art work can you make using squares?



Less means a **smaller**, or littler amount.

More means a **bigger**, or greater amount.

Equal means **the same amount**.

Which has **more**?

5

10

Red has **more than** blue because **10 is more than 5**.

Which has **more**?

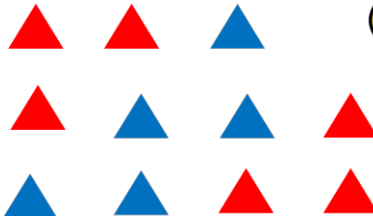


5

4

Red has **more than** blue because **5 is more than 4**.

Which has **more**?



Use your counter to show which has **more** – red or blue

How many of each colour are there?

### Show and Tell

This week's Show and Tell is on Thursday for Red group. For this half term, the theme is 'something I am good at.' Show and tell is an opportunity for each child to share something special with their class practising their speaking skills. The rest of the class practise their listening skills and have the chance to ask questions too. Your child might want to share a photo of them doing something they are good at, perhaps a hobby of theirs. They might have something they can bring in such as a

certificate from a club they have attended or maybe they want to share something they have drawn or made because they are good at art. These are just a few examples, but please feel free to send in something your child chooses. Photos can be emailed to [parents@stamford-green.surrey.sch.uk](mailto:parents@stamford-green.surrey.sch.uk) and should be labelled with your child's name and class in the subject line.

We hope you have a lovely week,

Mrs Ball, Miss Poole and Mrs McCarthy



## For your calendar:

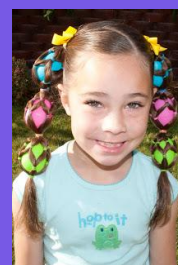
### YR – Y6 – Class Open Time 8.35am – 9.00am

Please come along on either Wednesday 10 January or Friday 12 January, to see your child's classroom and books.

There will be a sticker for you to complete, that will be stuck in your child's book as they love reading what you like and are proud of.

### Friday 19.1.24

PTA Crazy Hair Day  
Anything goes!



Suggested £1.00 cash donation.  
The PTA will be collecting the money at the East and West Gate on Friday morning.  
Please wear school uniform as usual.

## Coming up soon:

January		
Tuesday 2.1.24	8.35am	YN to Y6 – Nursery and school opens for the spring term
Monday 8.1.24	9.00am – 10.30am	Come and Play Toddler Group – South Gate entrance via Christ Church Mount only
Monday 8.1.24	8.00pm	PTA Meeting at The Blenheim – All welcome
Tuesday 9.1.24	All day	6B Visit Tate Britain and Houses of Parliament
Tuesday 9.1.24	9.15am – 10.15am	Prospective families Open Morning – School and Nursery - please book via our website
Tuesday 9.1.24	2.40pm or 3.10pm depending on your usual pick time until 3.30pm	YN Class Open Time – Option 1 Please pick one of the two options, not both
Wednesday 10.1.24	8.35am – 9.00am	YR – Y6 Class Open Time - Option 1 Please pick one of the two options, not both
Thursday 11.1.24	8.55am – 9.55am	PTA Class Reps Coffee Morning with Mrs Druce – Agenda: Spring term fundraising and spending plans
Thursday 11.1.24	6.30pm – 8.00pm	Y5 Star Gazing Event at school
Friday 12.1.24	8.35am – 9.00am	YR – Y6 Class Open Time Option 2 Please pick one of the two options, not both

Friday 12.1.24	2.40pm or 3.10pm depending on your usual pick up time until 3.30pm	YN Class Open Time – Option 2 Please pick one of the two options, not both
w/b Monday 15.1.24	-	Internal clubs start
Wednesday 17.1.24	8.45am – 9.30am	4MG's Class Assembly for Parents/Carers in the Hall
Wednesday 17.1.24	12.00pm – 11.30pm	Y5 Young Voices visit to O2 Arena
Thursday 18.1.24	8.45am – 9.30am	4V's Class Assembly for Parents/Carers in the Hall
Friday 19.1.24	All day	PTA's Crazy Hair Day
Friday 19.1.24	8.45am – 9.30am	4C's Class Assembly for Parents/Carers in the Hall

## Reminders for you:

### PTA Meeting Monday 8.1.24

We will be holding our first PTA Meeting of the spring term tonight at 8.00pm at The Blenheim.

Everyone is welcome.

### PTA Class Reps Coffee Morning

Thursday 11.1.23  
8.55am – 9.55am

### w/b Monday 15.1.24

Internal Clubs Start.

You will receive an email by Friday 12.1.24 if your child has gained a place at a club this half term.

The Nursery Application Form for September 2024 is still available on the school website under Nursery [Admissions](#). The closing date for Nursery applications is 15 January 2024.

We would like to say thank you very much for all your kind gifts and cards that were received by all the members of staff before the Christmas break. They were very much appreciated.